

LOGhouse

LOG CABINS SUPPLIER

PRODUCT CATALOGUE 2025

High Quality Log Cabins & Log Homes



01 201 7675 *DUBLIN*

021 243 9151 *CORK* | 090 661 6221 *ATHLONE*

WWW.LOGHOUSE.IE [f/LOGHOUSE.IE](#)   

The Company

Loghouse was first established in Ireland in 2007. With over 7500 installations to date we are Ireland's leading supplier of log cabins and garden outbuildings. We pride ourselves in being able to offer fully bespoke or customised log cabins to the customer's specifications. Currently the company operates from three locations within Ireland. We have a team of in-house sales associates, designers, architects and project managers with over 50 years of combined experience in the building industry.

At **Loghouse** we design and build a comprehensive range of premium quality log houses and cabins intended specifically for the Irish market and the weather conditions that Ireland provides. We offer the widest choice of log buildings available in Ireland which include four and five bedroom homes, holiday chalets, multi function log cabins, garages, and stables.



Why Us

All our structures have been specifically designed for the Irish climate with damp proof membranes, extra window seals, end trims and sealants to protect against the harsh Irish climate. Our foundations are designed to keep dampness away from the structure ensuring a longer lifespan of the building. These measures allow us to offer a written ten-year guarantee direct from our factory. All our timbers are from slow grown Scandinavian Pine and are FSC (Forest Stewardship Council) certified, certificates available upon request. Our people are well trained in their fields, safety certified and bonded for your reassurance. We practice CPD (Continuous Professional Development) as part of our commitment to stay up to date with the newest ideas, standards and techniques within the industry.



Our Factory

Our state of the art factory was established in 1995. Currently there are over 200 staff manufacturing all components of the cabin from the structural timbers to the doors and windows to the roof cladding. This guarantees a level of quality within the structure eliminating outsourcing from multiple manufacturers. All our timber is treated and milled by the finest German made machinery to the highest of tolerances. Our factory uses all of the timber purchased, where offcuts are used in glue laminate manufacturing and even the sawdust is reconstituted into wood pellets for stoves.

Tailor-made Building Solutions

At **Loghouse**, we offer a "bespoke" or custom design service to tailor all our pre-engineered models to your needs or start from scratch with your own idea with help from our highly qualified team of planners and log cabin experts, we will guide you through the design process. Our staff can provide working drawings, three dimensional renderings and technical specifications to suit your specific design so you can "see it" in real time before it is even built.



Log House buying Checklist

Ask The Question	Loghouse	Competitor
Safety Glass	✓	
Full Company Insurance	✓	
FSC Certification (FSC-C016970)	✓	
Structural Bond for habitable dwellings	✓	
Fully Bonded 10 year Manufacturers Guarantee	✓	
Safe Pass Employees Trained Installation Technicians	✓	
Over 50 years experience in Log Cabins & Construction Industry	✓	
Quality of Timber Scandinavian Pine	✓	
Is the model available for viewing?	✓	
All Doors and Windows – premium living type, glue-laminated frames, 5x point clocking, 24mm argon gas filled double glazing, built-in micro ventilation. Meets or exceeds Irish building standards for domestic building	✓	
Exterior wall covers on end of log junctions	✓	
Rainwater skirting flare around the cabin	✓	
Standard completion list at the end of the build	✓	
Free weathering package for better protection on all cabins	✓	
Dedicated after sales & quality control teams	✓	
More than 6000 cabins assembled Nationwide	✓	
5x showrooms across Dublin, Cork & Athlone	✓	
External insulation & shiplap cladding option for better protection & extended longevity	✓	
Steel flashings and fascias on all roofs as standard	✓	
In-house groundworks & plumbing service to avoid expensive subcontractors & save all the hassle.	✓	
Pressure treated floor bearers as standard on all cabins	✓	

Loghouse Quality Guaranteed

Did you know that Loghouse is the only fully certified, insured and bonded log cabin company in Ireland? We carry the following certifications and bonds:

1 FSC Certification. FSC forest management certification confirms that the forest is being managed in a way that preserves the natural ecosystem and benefits the lives of local people and workers, while ensuring it sustains economical viability. Ask to see this from our competitors.

2 As your building is 100% timber it is very important to ensure that your cabin is made from good quality wood to avoid problems like warping, twisting or excessive settling due to timber that has not been dried sufficiently. Where it is grown and how it is cured is of exceptional importance.

3 If the log house is to be a habitable dwelling a 10-year structural guarantee from Global Warranties.

This means your project would be visited at various stages of construction and signed off as completed as per best build practices and building regulations by qualified surveyors and industry professionals.

4 Public liability insurance, product and installation guarantee. We carry the most insurance of any of our competitors in the industry and our insurance certs

are on display in all our showrooms. Also on display are the manufacturer's guarantee and our own guarantee of trained, qualified service professionals. All our installers are safe pass certified before they are allowed to walk on a site.

✗ Ask to see the competitors credentials as it may save you the price of the cabin if they do not have the correct coverage and training.

✗ Beware of companies operating with little to no insurance, have the correct training and bonds and always request these documents before making a decision to buy. Your purchase of a cabin is important to you, so take the time and seek a company that not only stands behind their products, but also backs it up with the paperwork to ensure you do not lose your investment should any damages occur or warranty work is required.

Plumbing & Electrical Works Guidelines

All plumbing, heating, sewage, water mains connection, kitchen and bathroom works are carried out by our in-house team of experts. Please contact us for more details.

PRICE GUIDE:

- Plumbing €1,000 – €2,500
- Heating €1,000 – €5,000
- Sewage & water mains €1,500 – €3,000
- Kitchen €1,000 – €5,000
- Bathroom €1,500 – €5,000
- Main electrical connection starting from €15 per linear meter.
- Ground screws from €110/m²

All prices are subject to site survey and clients specification.



Windows & Doors

Loghouse setting a new standard again!

We are delighted to announce that all our log cabins now include 68mm glue-laminated windows and doors. Designed specifically for the Irish climate – definitely the best windows and doors on the market!

The main materials for glue-laminated timber window is pre-engineered, glued laminated pine. The main advantages of glue-laminated timber windows are considered their high strength, high levels of noise prevention, thermal insulation, long service period,

environmental safety and attractive appearance.

24mm Argon gas filled double glazing improves thermal efficiency by 16-30% and should not lose more than 5% of the total gas over a period of 25 years.

Other advantages of Loghouse.ie windows & doors



✓ Anti Warp
68mm Glulam
frame designed
for damp Irish
climate



✓ Aluminium
thresholds



✓ Twin rubber
seals & extra
strong hinges



✓ 3 position
window
with micro
ventilation

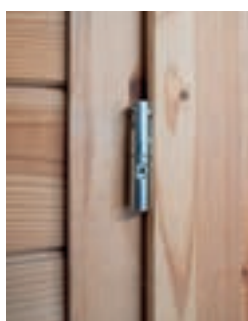


✓ 5 Point locking
system

Most of our competitors window and door standards



✗ Basic doors
45 mm solid
wood – industry
standard



✗ Basic hinges



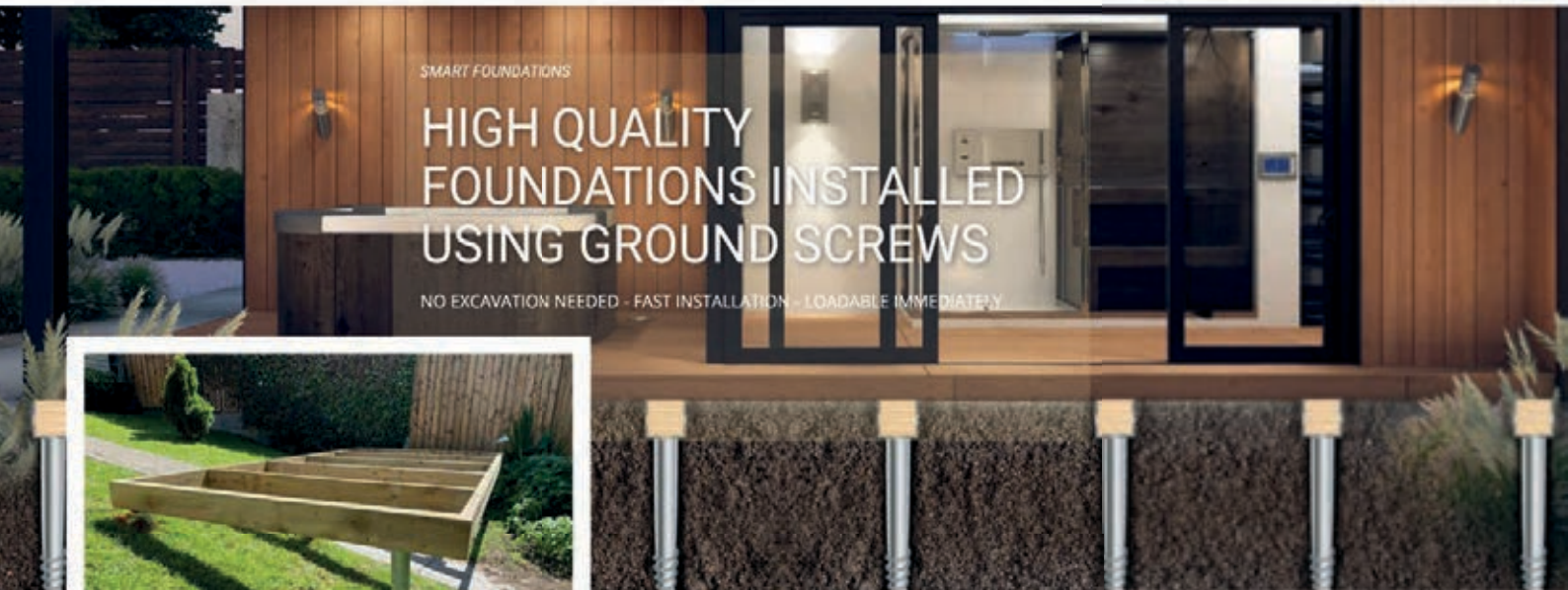
✗ Single point
locks



✗ Softwood
frame with
basic fittings



✗ Manual tilt
& turn operation



- Cost and time savings
- No digging, no concreting required
- Proven high pressures and pulling-out force
- Instantly loadable with no waiting period
- Sustainable and environmentally-friendly

We have teamed up with Smart Foundations Ireland to provide our clients with a solution for concrete-free foundations at an affordable cost!

Ground screws are installed without digging and damaging your garden or the environment, reducing your carbon footprint. Foundations with ground screws are stable for decades, yet environmentally friendly and removable if necessary. This is the easiest and most cost-effective way to get a timber base done for your garden room or log cabin.

Option 1: A fully insulated timber frame base is constructed from treated 4x2 inch (50x100mm) timber and supported by ground screws. The base is insulated with EPS 70 100mm and finished with 18mm T&G OSB board, creating a strong, insulated slab ready for flooring.



Option 2: Timber-frame base made out of treated 6x2 inch (50x150mm) timber and supported by ground screws, super sturdy and ready to be built immediately after the installation. Eco-friendly option and can be relocated if needed with minimum disturbance to the surroundings.



smartfoundationsireland

smartfoundationsIRL



Mob: 087 657 5592

Email: info@smartfoundations.ie

www.smartfoundations.ie

LOGhouse KITCHENS

Introducing Loghouse.ie Kitchens: Quality and Convenience, Now In-House

At **Loghouse.ie** we're excited to introduce a major enhancement to our services: all kitchen installations are now done in-house.



By bringing kitchen production under our roof, we can offer an unmatched level of quality and convenience, ensuring that each kitchen meets the same high standards that Loghouse.ie is known for. This strategic change means we no longer rely on third-party suppliers, allowing us to deliver a truly seamless, one-stop-shop experience for our clients.

This new in-house approach comes with a range of benefits for our customers. With every kitchen now designed and built specifically for our log cabins, we can guarantee that your kitchen will be ready for installation at the same time as your cabin's arrival.

This efficient coordination removes the hassle of managing separate

orders and schedules and ensures you'll have a functional, stylish kitchen from day one.

Our design team has carefully crafted a selection of kitchens to perfectly complement each of our standard residential cabins. These thoughtfully designed spaces combine practicality with aesthetic appeal, maximizing the available space and creating an inviting environment.



In addition to our standard options, we're also delighted to offer custom kitchen solutions to meet each client's specific needs and preferences.

For those interested in exploring the possibilities, our friendly and knowledgeable sales team is ready to guide you through our options and help you choose or design the ideal kitchen. We invite you to contact us directly to discuss your vision or visit our showroom to see examples of our work.



At **Loghouse.ie**, we're committed to delivering convenience, quality, and craftsmanship. With our new in-house kitchens, we're proud to make your log cabin buying experience even more complete—no compromises, no delays, just the perfect space tailored to your needs. Enquire within to learn more and let us help you create the cabin of your dreams, complete with a kitchen designed just for you.



LOGhouse

THERMO CLADDING

Thermally treated pine products

The use of thermally modified timber has increased significantly across the world over the past 20 years. Products and production techniques have been developed and improved over the decades.



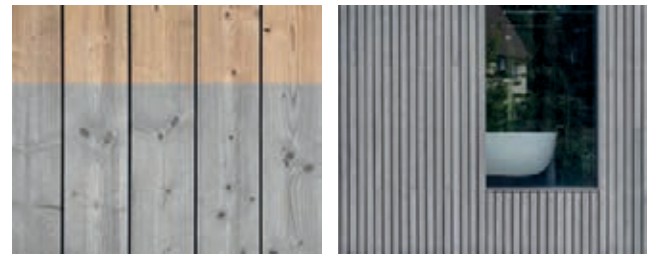
Alternative for Siberian larch

Thermowood is known for its extreme dimensional stability in all climates. The thermal modification with only heat and steam, without any chemicals or toxins, enhances the Finnish Pine and Spruce into a durable and long lasting material for decorative surfaces. Natural greying of **THERMOWOOD** is combined with low maintenance and yet a long life-cycle of the products. All these properties make **THERMOWOOD** a sustainable and technically pre-eminent alternative for Siberian Larch.

Technical Comparison	Siberian Larch	Thermo wood
Dimensional Stability	-	✓
Durability (EN ISO 350-2)	Class 3	Class 2
Delamination	✓	-
Cracking	✓	-
Low maintenance	✓	✓
Natural greying	✓	✓
Knots	-	✓
Life cycle	20-30y	20-30y (BRE)
Availability	✓	✓
Origin	Russia	Finland

Natural Greying

The use of thermally modified timber has increased significantly across the world over the past 20 years. Products and production techniques have been developed and improved over the decades.



Environmentally friendly

No chemicals are used in the production of **THERMOWOOD** products. The production method is a result of extensive development work and it is based on the controlled modification of timber with high-temperature drying, thermal modification & cooling, and moisture conditioning. The process results in permanent physical and chemical changes in the wood. The new properties remain unchanged, even when the timber is processed with methods such as sawing or planing. This also applies to the colour of the product.

Advantages over natural timber:

Thermowood products differ from standard timber in several ways:

- Reduced Swelling and Shrinkage due to Moisture
- Enhanced Dimensional Stability
- Better Biological Durability
- Darker Colour
- No Resin
- Lower Thermal Conductivity

Thermowood Cladding and Decking Pricing:

			
Thermo Decking, Grooved	Thermo KitKat	Thermo T&G	Thermo T&G shadow line
26x117/140mm	26x92/117/140mm	19x117mm	19x92mm
€45.00 per sqm	€41.30 per sqm	€33.31 per sqm	€35.95 per sqm
			



LOGhouse

CHARRED CLADDING

“Shou Sugi Ban” is a Japanese technology designed to create unique wooden products by treating wood with fire. Our craftsmen burn the prepared wood in a special “Shou Sugi Ban” furnace, which creates a unique and durable layer of charcoal.

The special “Shou Sugi Ban” technology we use is inspired by ancient Japanese traditions.

By burning the surface of the wood at very high temperatures, the wood becomes waterproof and more durable, protected against pests and fire.

Yakisugi History:

Yakisugi is a traditional Japanese wood charring method. Yaki means to heat with fire, and sugi is cypress. In the West, it is also known as burnt (charred) wood and is also known as “Shou Sugi Ban”.

By burning the surface of the wood at very high temperatures, the wood becomes waterproof and more durable, protected against pests and fire.

Sustainable Beauty and Original Strength

The main power of fire remains visible in the colour and structure of the wood. All types of wood used have their unique structure and application, both from an aesthetic and a physical structure point of view. DRAGONWOOD wood, made by the “Shou Sugi Ban” method, is very suitable for facade finishing, exclusive interiors, and furniture production.

Advantages:

- 1. Durability:** Shou Sugi Ban significantly enhances the durability of wood by creating a charred layer that acts as a barrier against insects, decay, and weathering. This can extend the lifespan of the wood, reducing the need for frequent maintenance or replacement.
- 2. Resistance to Decay and Insects:** The charred surface is resistant to decay, fungi, and insects. This makes it an excellent choice for exterior applications, where wood is exposed to harsh environmental conditions.
- 3. Weather Resistance:** Shou Sugi Ban cladding is known for its ability to withstand various weather conditions, including rain, snow, and UV radiation. The charred layer acts as a protective shield, preventing the wood from warping, cracking, or deteriorating due to exposure to the elements.
- 4. Low Maintenance:** The charring process creates a low-maintenance finish. Unlike untreated wood, Shou Sugi Ban cladding requires minimal upkeep. The charred surface helps in repelling dirt and dust, making it easier to clean and maintain the appearance of the wood.
- 5. Aesthetic Appeal:** Shou Sugi Ban cladding has a unique and striking appearance. The charred surface brings out the wood's natural grain and texture while creating a visually appealing contrast. The technique can be applied to various wood species, allowing for a range of design possibilities.
- 6. Fire Resistance:** While it might seem counterintuitive, the charred layer can contribute to the wood's fire resistance. The outer layer can act as a protective barrier, making it more challenging for fire to penetrate the wood and spread.
- 7. Sustainability:** Depending on the source of the wood, Shou Sugi Ban can be considered a sustainable choice. The process involves using natural materials and can be applied to wood from responsibly managed forests, contributing to environmentally friendly building practices.
- 8. Natural Insulation:** The charred layer can provide some level of insulation to the wood, helping regulate temperature and potentially improving energy efficiency in buildings.

Loghouse.ie Charred Larch Cladding

Wood	Thickness (mm)	Width (mm)	Face cover (mm)	Length (mm)	Gap between boards	Price/m ² ex VAT
Charred Larch Cladding	18-20	95	85	3000	5	€67
		120	110	4000	10	
		145	135	6000	N/A	



Anthracite



Black



Chestnut



Grey



Hazelnut



Mahogany



Natural



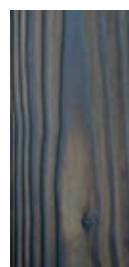
Stone Grey



Teak



Thunder Grey



Walnut



White

Inch 2.5m x 2m

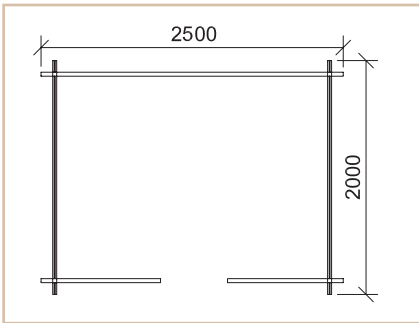


Price
€3,680

Delivered in flatpack

Price includes:

- FREE** steel roofing tiles
- FREE** damp proof membrane
- FREE** 50mm floor insulation
- FREE** weathering package



Cabin Details

Wall thickness	44mm
Size	2.5m x 2m (8.2ft x 6.6ft)
Doors	Premium living type door
Roof	Steel roof tiles
Ridge height	2450mm
Wall height	2080mm
Floor bearers	45mm x 50mm

Available Upgrades

Cabin assembly	€500
Timber frame & block foundation*	€430
100mm roof insulation	€200
Wall insulation & T&G cladding	€840
External wall insulation & Shiplap cladding	€1,000
Laminated flooring	€235
External painting (excl. paint)	€490
External + Internal (excl. paint)	€770
Gutters & downpipes	€150
Thermowood cladding**	€680
Charred cladding	€1,130

* Includes foundation cover up to 30cm + single step (width of the door).

** Add on to External wall insulation + Shiplap cladding option.

Athy 3m x 2m

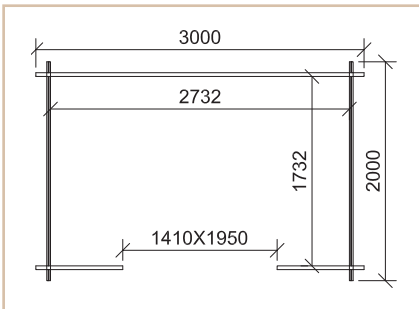
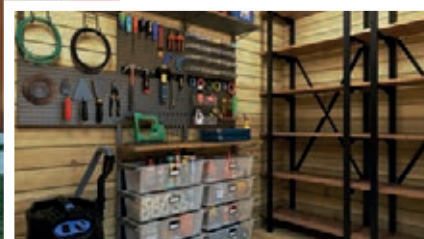


Price
€4,350

Delivered in flatpack

Price includes:

- FREE** steel roofing tiles
- FREE** damp proof membrane
- FREE** 50mm floor insulation
- FREE** weathering package



Cabin Details:

Wall thickness	45mm
Size	3m x 2m (9.8ft x 6.6ft)
Doors	Premium living type door
Roof	Steel roof tiles
Ridge height	2160mm
Wall height	1960mm
Floor bearers	45mm x 50mm

Available Upgrades:

Cabin assembly	€550
Timber frame & block pad foundation*	€610
100mm roof insulation	€200
Wall insulation & T&G cladding	€900
External wall insulation & Shiplap cladding	€1,080
Laminated flooring	€235
External painting (excl. paint)	€490
External + Internal (excl. paint)	€700
Gutter & downpipe	€120
Thermowood cladding**	€730
Charred cladding	€1,305

* Includes foundation cover up to 30cm + single step (width of the door).

** Add on to External wall insulation + Shiplap cladding option.

Avoca 3.4m x 2.5m

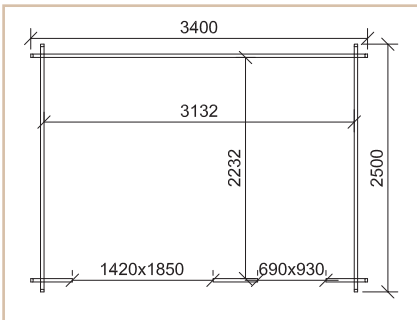


Price
€5,550

Delivered in flatpack

Price includes:

- FREE** steel roofing tiles
- FREE** damp proof membrane
- FREE** 50mm floor insulation
- FREE** weathering package



* Includes foundation cover up to 30cm + single step (width of the door).

** Add on to External wall insulation + Shiplap cladding option.

Cabin Details

Wall thickness	45mm
Size	3.4m x 2.5m (11.2ft x 8.2ft)
Doors	Premium living type door
Windows	Premium living type window
Roof	Steel roof tiles
Ridge height	2450mm
Wall height	2050mm
Floor bearers	45mm x 50mm

Available Upgrades

Cabin assembly	€740
Timber frame & block foundation*	€830
100mm roof insulation	€270
Wall insulation & T&G cladding	€1,170
External wall insulation & Shiplap cladding	€1,390
Laminated flooring	€330
External painting (excl. paint)	€630
External + Internal (excl. paint)	€950
Gutters & downpipes	€210
Thermowood cladding**	€950
Charred cladding	€1,620

Arklow 3.4m x 2.5m

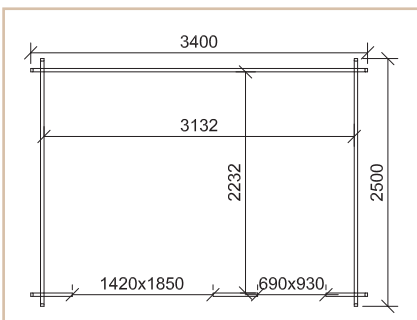


Price
€5,710

Delivered in flatpack

Price includes:

- FREE** steel roofing tiles
- FREE** damp proof membrane
- FREE** 50mm floor insulation
- FREE** weathering package



* Includes foundation cover up to 30cm + single step (width of the door).

** Add on to External wall insulation + Shiplap cladding option.

Cabin Details

Wall thickness	45mm
Size	3.4m x 2.5m (11.2ft x 8.2ft)
Doors	Premium living type door
Windows	Premium living type window
Roof	Steel roof tiles
Ridge height	2450mm
Wall height	2050mm
Floor bearers	45mm x 50mm

Available Upgrades

Cabin assembly	€740
Timber frame & block foundation*	€830
100mm roof insulation	€270
Wall insulation & T&G cladding	€1,170
External wall insulation & Shiplap cladding	€1,390
Laminated flooring	€330
External painting (excl. paint)	€630
External + Internal (excl. paint)	€950
Gutters & downpipes	€210
Thermowood cladding**	€950
Charred cladding	€1,620

Laragh 3m x 3m, 3m x 4m



FREE
GERMAN MADE
SCHUCO PVC
WINDOW & DOOR UPGRADE
(WHILE STOCK LAST)

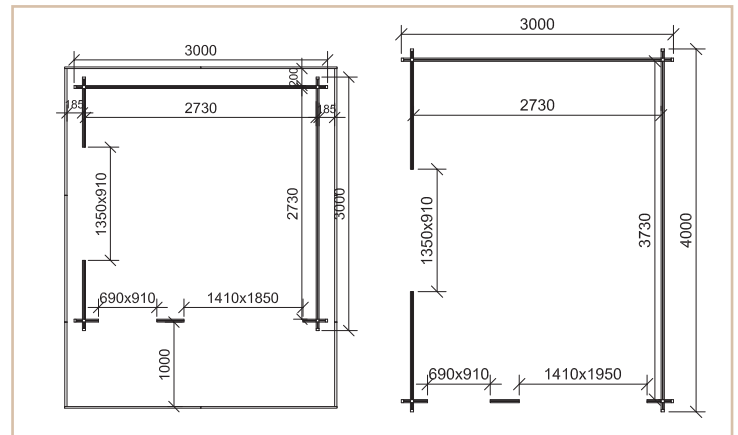
Price includes:

- FREE** steel roofing tiles
 - FREE** damp proof membrane
 - FREE** 50mm floor insulation
 - FREE** weathering package
- Delivered in flatpack



Cabin Details:

Wall thickness	45mm
Overall Size	3m x 3m (9.8ft x 9.8ft) or 3m x 4m (9.8ft x 13ft)
Doors	Premium living type door
Windows	Premium living type windows
Roof	Steel roof tiles
Ridge height	2450mm
Wall height	2050mm
Floor bearers	45mm x 50mm



Price	€6,570	€7,330
Available upgrades	3m x 3m	3m x 4m
Cabin assembly	€780	€1,000
Timber frame & block foundation*	€870	€940
100m roof insulation	€290	€370
Wall insulation & T&G cladding	€1,170	€1,360
External insulation & Shiplap cladding	€1,390	€1,630
Laminated flooring	€350	€470
External painting (excl. paint)	€580	€680
External + Internal painting (excl. paint)	€1,100	€1,150
Gutters & downpipes	€240	€300
Thermowood cladding**	€970	€1,120
Charred cladding**	€1,755	€1,935

* Includes foundation cover up to 30cm + single step (width of the door).

** Add on to External wall insulation + Shiplap cladding option.

Greystones 4m x 3m & 4m x 4m

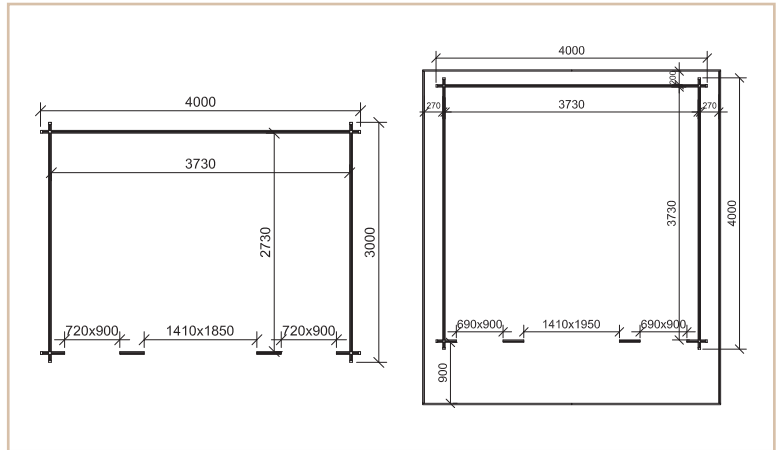


Price includes:

- FREE** steel roofing tiles
 - FREE** damp proof membrane
 - FREE** 50mm floor insulation
 - FREE** weathering package
- Delivered in flatpack



Cabin Details:	
Wall thickness	45mm
Overall Size	4m x 3m (13ft x 9.8ft) or 4m x 4m (13ft x 13ft)
Doors	Premium living type door
Windows	Premium living type windows
Roof	Steel roof tiles
Ridge height	2450mm
Wall height	2110mm
Floor bearers	45mm x 50mm



Price	€7,180	€8,080
Available upgrades	4m x 3m	4m x 4m
Cabin assembly	€1,000	€1,300
Timber frame & block foundation*	€940	€1,140
100m roof insulation	€370	€470
Wall insulation & T&G cladding	€1,380	€1,580
External insulation & Shiplap cladding	€1,660	€1,890
Laminated flooring	€470	€625
External painting (excl. paint)	€680	€740
External + Internal (excl. paint)	€1,150	€1,280
Gutters & downpipes	€240	€300
Thermowood cladding**	€1,400	€1,580
Charred cladding**	€1,935	€2,140

* Includes foundation cover up to 30cm + single step (width of the door).
 ** Add on to External wall insulation + Shiplap cladding option.



Price
€7,610

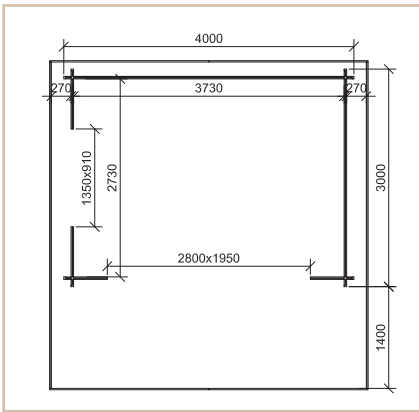
Delivered in flatpack

Price includes:

- FREE** steel roofing tiles
- FREE** damp proof membrane
- FREE** 50mm floor insulation
- FREE** double glazed windows & doors
- FREE** weathering package



Cork 4m x 3m



Cabin Details

Wall thickness	45mm
Size	4m x 3m (13ft x 9.8ft)
Doors	Premium living type door
Windows	Premium living type windows
Roof	Steel roof tiles
Ridge height	2450mm
Wall height	2110mm
Floor bearers	45mm x 50mm

* Includes foundation cover up to 30cm + single step (width of the door)

** Add on to External wall insulation + Shiplap cladding option.

Available Upgrades

Cabin assembly	€1,000
Timber frame & block foundation*	€940
100mm roof insulation	€370
Wall insulation & T&G cladding	€1,350
External insulation & Shiplap cladding	€1,620
Laminated flooring	€470
External painting (excl. paint)	€730
External + Internal (excl. paint)	€1,200
Gutters & downpipes	€270
Veranda	€600
Thermowood cladding**	€1,120
Charred cladding	€1,920

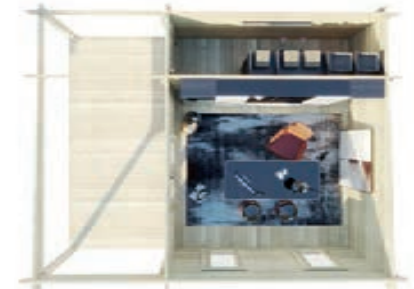
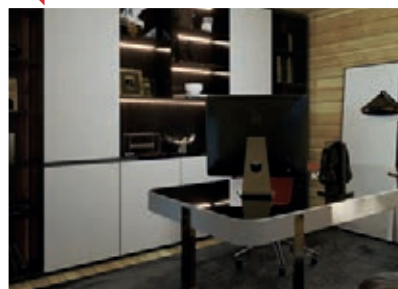


Price
€12,230

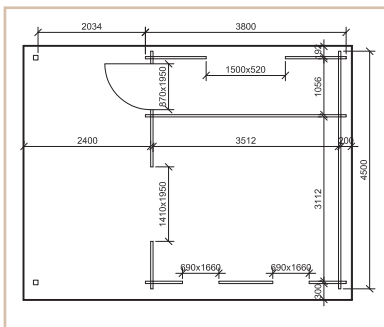
Delivered in flatpack

Price includes:

- FREE** steel roofing tiles
- FREE** damp proof membrane
- FREE** 50mm floor insulation
- FREE** double glazed windows & doors
- FREE** weathering package



Rathcoole 6m x 4.5m



Cabin Details

Walls	45mm
Size	6m x 4.5m (19.7ft x 14.7ft)
Doors	Premium living type door
Windows	Premium living type windows
Roof	Steel roof tiles
Ridge height	2600mm
Wall height	2210mm
Floor bearers	45mm x 50mm

* Includes foundation cover up to 30cm + single step (width of the door).

** Add on to External wall insulation + Shiplap cladding option.

Available Upgrades

Cabin assembly	€2,080
Timber frame & block foundation*	€1,750
100mm roof insulation	€740
Wall insulation & T&G cladding	€1,750
External insulation & Shiplap cladding	€2,050
Laminated flooring	€670
External painting (excl. paint)	€800
External + Internal (excl. paint)	€1,500
Gutters & downpipes	€180
Thermowood cladding**	€1,380
Charred cladding	€2,290

Ashford 4m x 3m, 4m x 4m, 5m x 3m



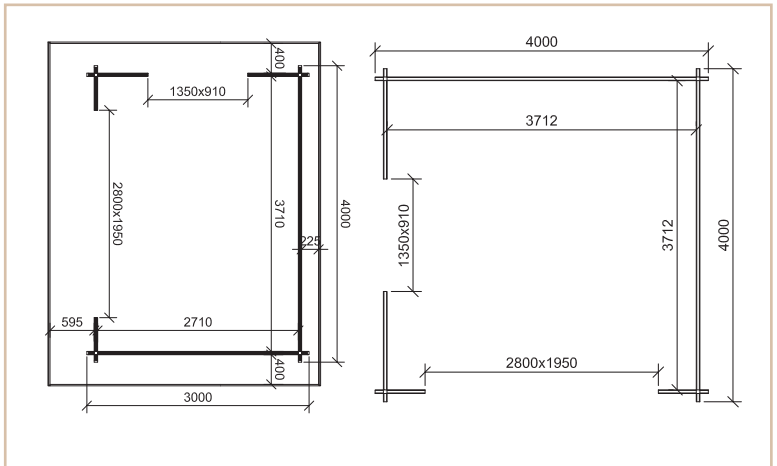
FREE
GERMAN MADE
'SCHUCO' PVC
WINDOW & DOOR UPGRADE
(WHILE STOCK LAST)

Price includes:

- FREE** steel roofing tiles
 - FREE** damp proof membrane
 - FREE** 50mm floor insulation
 - FREE** double glazed windows & doors
 - FREE** weathering package
- Delivered in flatpack



Cabin Details:	
Wall thickness	45mm
Size	4m x 3m (13ft x 9.8ft), 4m x 4m (13ft x 13ft) or 5m x 3m (16ft x 9.8ft)
Doors	Premium living type door
Windows	Premium living type windows
Roof	Steel roof tiles
Ridge height	2415mm
Wall height	2155mm
Floor bearers	45mm x 50mm



Price	€7,370	€8,110	€8,140
Available upgrades	4m x 3m	5m x 3m	4m x 4m
Cabin assembly	€1,000	€1,230	€1,300
Timber frame & block foundation*	€940	€1,080	€1,140
100m roof insulation	€370	€450	€470
Wall insulation & T&G cladding	€1,290	€1,540	€1,480
External insulation & Shiplap cladding	€1,550	€1,890	€1,770
Laminated flooring	€470	€585	€625
External painting (excl. paint)	€650	€730	€740
External + Internal (excl. paint)	€1,120	€1,270	€1,290
Gutter & downpipe	€120	€150	€120
Thermowood cladding**	€1,090	€1,240	€1,230
Charred cladding**	€1,760	€2,020	€2,030

* Includes foundation cover up to 30cm + single step (width of the door).

** Add on to External wall insulation + Shiplap cladding option.

Newcastle 4m x 3m, 4m x 4m, 5m x 3m



FREE
GERMAN MADE
SCHUCO® PVC
WINDOW & DOOR UPGRADE
(WHILE STOCK LAST)

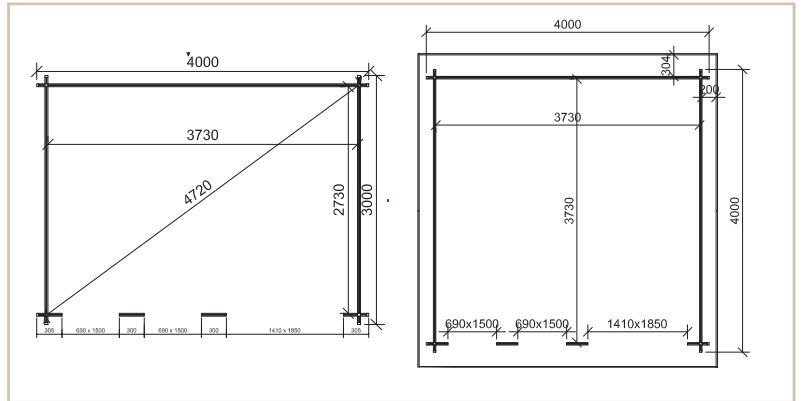
Price includes:

- FREE** steel roofing tiles
 - FREE** damp proof membrane
 - FREE** 50mm floor insulation
 - FREE** double glazed windows & doors
 - FREE** weathering package
- Delivered in flatpack



Cabin Details:

Wall thickness	45mm
Size	4m x 3m (13ft x 9.8ft), 4m x 4m (13ft x 13ft) or 5m x 3m (16ft x 9.8ft)
Doors	Premium living type door
Windows	Premium living type windows
Roof	Steel roof tiles
Ridge height	2500mm
Wall height	2100mm
Floor bearers	45mm x 50mm



Price	€7,330	€8,140	€8,430	€9,230
Available upgrades	4m x 3m	5m x 3m	4m x 4m	6m x 3m
Cabin assembly	€1,000	€1,230	€1,300	€1,350
Timber frame & block foundation*	€940	€1,080	€1,140	€1,190
100mm Roof insulation	€370	€450	€470	€530
Wall insulation & T&G cladding	€1,380	€1,580	€1,580	€1,780
External insulation & Shiplap cladding	€1,660	€1,890	€1,890	€2,140
Laminated flooring	€470	€585	€625	€710
External painting (excl. paint)	€680	€740	€740	€830
External + Internal (excl. paint)	€1,150	€1,280	€1,280	€1,320
Gutters & downpipes	€240	€300	€240	€360
Thermowood cladding**	€1,130	€1,290	€1,340	€1,440
Charred cladding**	€1,870	€2,140	€2,190	€2,400

* Includes foundation cover up to 30cm + single step (width of the door).
** Add on to External wall insulation + Shiplap cladding option.

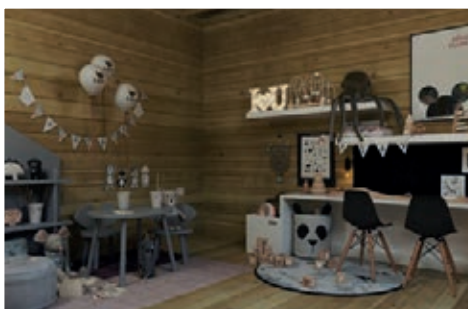


Price
€9,290

Delivered in flatpack

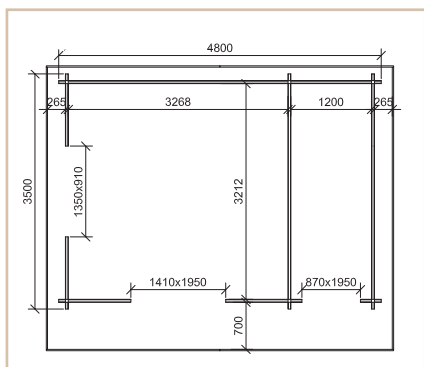
Price includes:

- FREE** steel roofing tiles
- FREE** damp proof membrane
- FREE** 50mm floor insulation
- FREE** double glazed windows & doors
- FREE** weathering package



Leitrim

4.8m x 3.5m



Cabin Details

Wall thickness	45mm
Size	4.8m x 3.5m (15.7ft x 11.5ft)
Doors	Premium living type doors
Windows	Premium living type windows
Roof	Steel roof tiles
Ridge height	2535mm
Wall height	2145mm
Floor bearers	45mm x 50mm

* Includes foundation cover up to 30cm + single step (width of the door).

** Add on to External wall insulation + Shiplap cladding option.

Available Upgrades

Cabin assembly	€1,350
Timber frame & block foundation*	€1,310
100mm roof insulation	€520
Wall insulation & T&G cladding	€1,640
External insulation & Shiplap Cladding	€1,970
Laminated flooring	€655
External painting (excl. paint)	€780
External + Internal (excl. paint)	€1,350
Gutters & downpipes	€250
Thermowood cladding**	€1,390
Charred cladding	€2,220



Price
€9,010

Delivered in flatpack

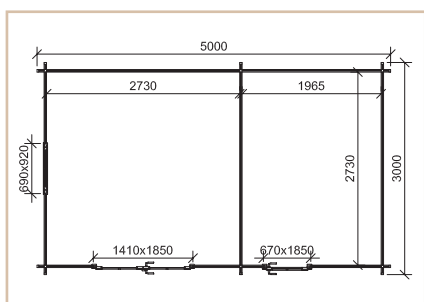
Price includes:

- FREE** steel roofing tiles
- FREE** damp proof membrane
- FREE** 50mm floor insulation
- FREE** double glazed windows & doors
- FREE** weathering package



Dundrum

5m x 3m



Cabin Details

Walls	45mm
Size	5m x 3m (16.4ft x 9.8ft)
Doors	Premium living type doors
Windows	Premium living type windows
Roof	Steel roof tiles
Ridge height	2650mm
Wall height	1810mm / 2310mm
Floor bearers	45mm x 50mm

* Includes foundation cover up to 30cm + single step (width of the door).

** Add on to External wall insulation + Shiplap cladding option.

Available Upgrades

Cabin assembly	€1,230
Timber frame & block foundation*	€1,080
100mm roof insulation	€450
Wall insulation & T&G cladding	€1,630
External insulation & Shiplap cladding	€1,950
Laminated flooring	€585
External painting (excl. paint)	€820
External + Internal (excl. paint)	€1,550
Gutters & downpipes	€210
Thermowood cladding**	€1,400
Charred cladding	€2,240

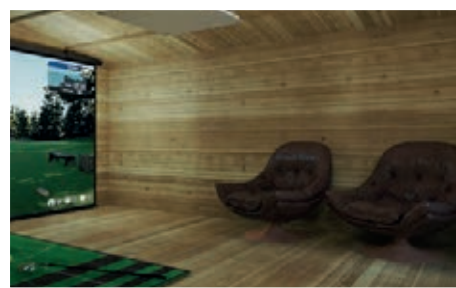
Dublin



Price includes:

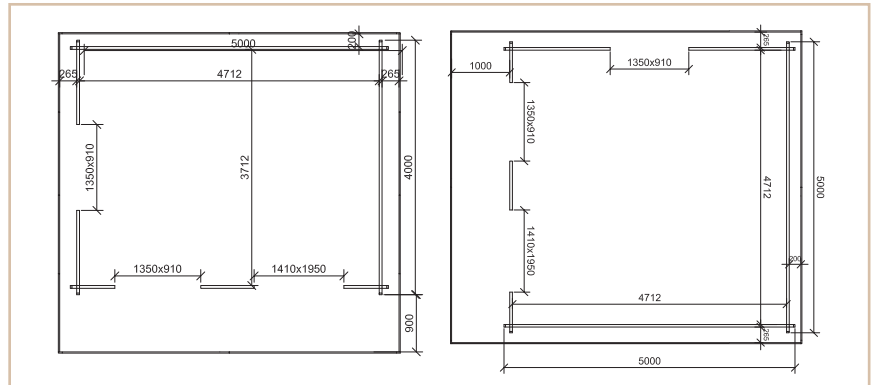
- FREE** steel roofing tiles
- FREE** damp proof membrane
- FREE** 50mm floor insulation
- FREE** double glazed windows & doors
- FREE** weathering package

Delivered in flatpack



Cabin Details:

Wall thickness	45mm
Size	4m x 4m, 4m x 5m, 5m x 4m, 6m x 4m, 5m x 5m
Doors	Premium living type door
Windows	Premium living type windows
Roof	Steel roof tiles
Ridge height	2535mm
Wall height	2145mm
Floor bearers	45mm x 50mm



Price	€8,760	€9,600	€9,600	€10,700	€10,630
Available upgrades	4m x 4m	4m x 5m	5m x 4m	6m x 4m	5m x 5m
Cabin assembly	€1,300	€1,600	€1,600	€1,900	€1,980
Timber frame & block foundation*	€1,140	€1,400	€1,320	€1,570	€1,630
100m roof insulation	€470	€580	€580	€680	€700
Wall insulation & T&G cladding	€1,580	€1,780	€1,780	€2,030	€1,980
External insulation & Shiplap cladding	€1,890	€2,140	€2,140	€2,440	€2,370
Laminated flooring	€625	€780	€780	€925	€975
External painting (excl. paint)	€850	€910	€910	€940	€910
External + Internal (excl. paint)	€1,290	€1,450	€1,450	€1,550	€1,650
Gutters & downpipes	€300	€360	€300	€300	€360
Veranda	€540	€660	€660	€800	€660
Thermowood cladding**	€1,320	€1,470	€1,500	€1,730	€1,650
Charred cladding**	€2,140	€2,420	€2,420	€2,890	€2,690

* Includes foundation cover up to 30cm + single step (width of the door). ** Add on to External wall insulation + Shiplap cladding option.

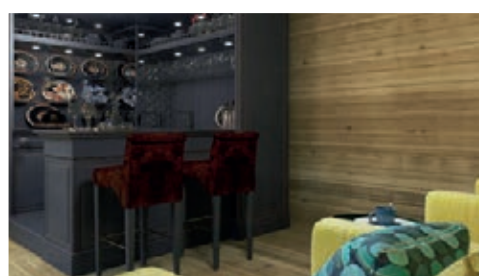
Kilkenny



Price includes:

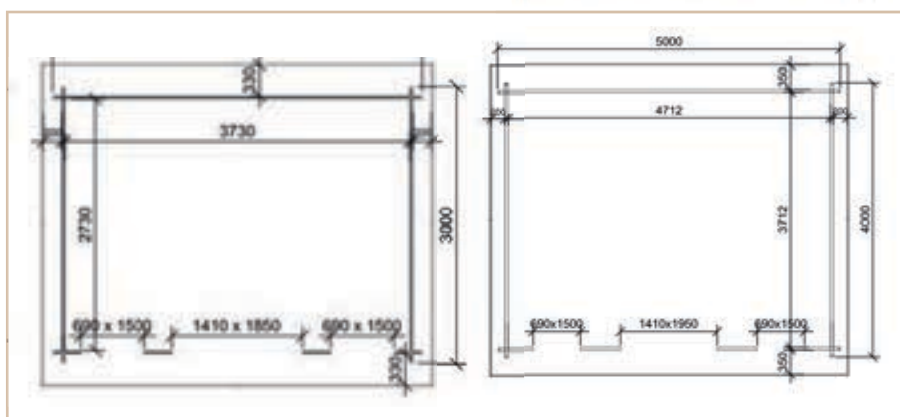
- FREE** steel roofing tiles
- FREE** damp proof membrane
- FREE** 50mm floor insulation
- FREE** double glazed windows & doors
- FREE** weathering package

Delivered in flatpack



Cabin Details:

Wall thickness	45mm
Size	4m x 3m, 5m x 3m, 4m x 4m, 6m x 3m, 5m x 4m, 6m x 4m, 5m x 5m
Doors	Premium living type door
Windows	Premium living type windows
Roof	Steel roof tiles
Ridge height	2500mm
Wall height	2100mm
Floor bearers	45mm x 50mm



Price	€7,330	€8,140	€8,430	€9,230	€9,390	€10,340	€10,360
Available upgrades	4m x 3m	5m x 3m	4m x 4m	6m x 3m	5m x 4m	6m x 4m	5m x 5m
Cabin assembly	€1,000	€1,230	€1,300	€1,350	€1,600	€1,900	€1,980
Timber frame & block foundation*	€940	€1,080	€1,140	€1,190	€1,320	€1,570	€1,630
100m roof insulation	€370	€450	€470	€530	€580	€680	€700
Wall insulation & T&G cladding	€1,380	€1,580	€1,580	€1,780	€1,780	€1,980	€2,050
External insulation & Shiplap cladding	€1,660	€1,890	€1,890	€2,140	€2,140	€2,370	€2,450
Laminated flooring	€470	€585	€625	€710	€780	€935	€975
External painting (excl. paint)	€680	€740	€740	€830	€910	€940	€910
External + Internal (excl. paint)	€1,150	€1,280	€1,280	€1,320	€1,450	€1,550	€1,650
Gutters & downpipes	€240	€300	€240	€360	€300	€360	€300
Thermowood cladding**	€1,130	€1,290	€1,340	€1,440	€1,500	€1,650	€1,690
Charred cladding**	€1,870	€2,140	€2,190	€2,400	€2,470	€2,740	€2,760

*Roof feature not available with steel roof. * Includes foundation cover up to 30cm + single step (width of the door).

** Add on to External wall insulation + Shiplap cladding option.

Kilkenny 2 rooms



FREE
GERMAN MADE
SCHUCHO PVC
WINDOW & DOOR UPGRADE
(WHILE STOCK LAST)

Price includes:

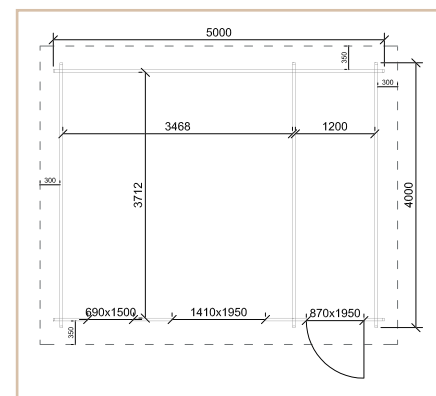
- FREE** steel roofing tiles
- FREE** damp proof membrane
- FREE** 50mm floor insulation
- FREE** double glazed windows & doors
- FREE** weathering package

Delivered in flatpack



Cabin Details:

Wall thickness	45mm
Size	5m x 3m 5m x 4m 5m x 5m 6m x 4m
Doors	Premium living type door
Windows	Premium living type windows
Roof	Steel roof tiles
Ridge height	2500mm
Wall height	2100mm
Floor bearers	45mm x 50mm



Price	€8,820	€10,190	€10,350	€11,300	€11,460
Available upgrades	5m x 3m	5m x 4m	6m x 3m	6m x 4m	5m x 5m
Cabin assembly	€1,230	€1,600	€1,900	€1,900	€1,980
Timber frame & block foundation**	€1,080	€1,320	€1,570	€1,570	€1,630
100m roof insulation	€450	€580	€680	€680	€700
Wall insulation & T&G cladding	€1,580	€1,780	€1,780	€1,980	€2,050
External insulation & Shiplap cladding	€1,890	€2,140	€2,140	€2,370	€2,450
Laminated flooring	€585	€780	€710	€935	€975
External painting (excl. paint)	€760	€925	€830	€940	€925
External + Internal (excl. paint)	€1,380	€1,500	€1,500	€1,650	€1,500
Gutters & downpipes	€300	€300	€360	€360	€300
Thermowood cladding**	€1,290	€1,500	€1,440	€1,650	€1,690
Charred cladding**	€2,140	€2,470	€2,400	€2,740	€2,760

*Roof feature not available with steel roof. * Includes foundation cover up to 30cm + single step (width of the door).

** Add on to External wall insulation + Shiplap cladding option.

Wicklow



Price includes:

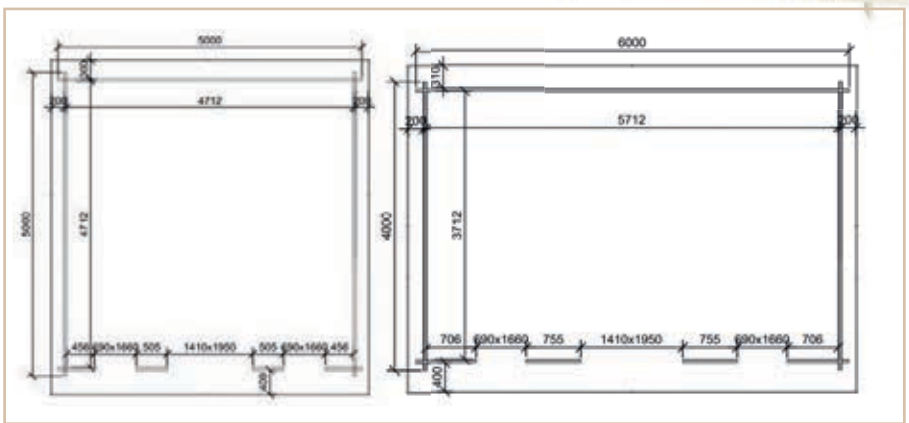
- FREE** steel roofing tiles
- FREE** damp proof membrane
- FREE** 50mm floor insulation
- FREE** double glazed windows & doors
- FREE** weathering package

Delivered in flatpack



Cabin Details:

Wall thickness	45mm
Size	6m x 4m, 5m x 4m, 5m x 5m, 5m x 3m
Doors	Premium living type door
Windows	Premium living type windows
Roof	Steel roof tiles
Ridge height	2600mm
Wall height	2080mm
Floor bearers	45mm x 50mm



Price	€7,760	€9,150	€9,060	€10,140	€10,290
Available upgrades	5m x 3m	5m x 4m	6m x 3m	6m x 4m	5m x 5m
Cabin assembly	€1,230	€1,600	€1,420	€1,900	€1,900
Timber frame & block foundation*	€1,080	€1,320	€1,140	€1,570	€1,630
100m roof insulation	€450	€580	€530	€680	€700
Wall insulation & T&G cladding	€1,580	€1,780	€2,030	€1,980	€2,030
External insulation & Shiplap cladding	€1,890	€2,140	€2,190	€2,370	€2,440
Laminated flooring	€585	€780	€710	€935	€975
External painting (excl. paint)	€740	€910	€830	€920	€950
External + Internal (excl. paint)	€1,280	€1,450	€1,320	€1,550	€1,650
Gutter & downpipe	€150	€150	€180	€180	€150
Thermowood cladding**	€1,330	€1,500	€1,490	€1,660	€1,740
Charred cladding**	€2,140	€2,470	€2,400	€2,740	€2,760

* Includes foundation cover up to 30cm + single step (width of the door) ** Add on to External wall insulation + Shiplap cladding option.

Wicklows 2 rooms



FREE
GERMAN MADE
SCHUCO PVC
WINDOW & DOOR UPGRADE
(WHILE STOCK LAST)

Price includes:

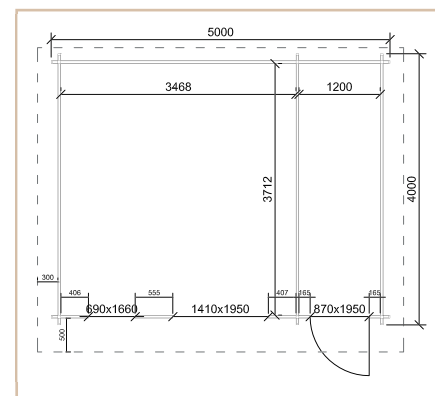
FREE steel roofing tiles
FREE damp proof membrane
FREE 50mm floor insulation
FREE double glazed windows & doors
FREE weathering package

Delivered in flatpack



Cabin Details:

Wall thickness	45mm
Size	5m x 3m 5m x 4m 5m x 5m 6m x 4m
Doors	Premium living type door
Windows	Premium living type windows
Roof	Steel roof tiles
Ridge height	2600mm
Wall height	2080mm
Floor bearers	45mm x 50mm



Price	€8,860	€10,230	€10,370	€11,080	€11,540
Available upgrades	5m x 3m	5m x 4m	6m x 3m	6m x 4m	5m x 5m
Cabin assembly	€1,230	€1,600	€1,420	€1,900	€1,980
Timber frame & block foundation*	€1,080	€1,320	€1,140	€1,570	€1,630
100m roof insulation	€450	€580	€530	€680	€700
Wall insulation & T&G cladding	€1,540	€1,780	€2,030	€1,980	€2,030
External insulation & Shiplap cladding	€1,890	€2,140	€2,190	€2,370	€2,440
Laminated flooring	€585	€780	€710	€935	€975
External painting (excl. paint)	€760	€925	€830	€940	€925
External + Internal (excl. paint)	€1,380	€1,500	€1,500	€1,600	€1,500
Gutters & downpipes	€150	€150	€180	€180	€150
Thermowood cladding**	€1,330	€1,500	€1,490	€1,660	€1,740
Charred cladding**	€2,140	€2,470	€2,400	€2,740	€2,760

*Roof feature not available with steel roof. ** Includes foundation cover up to 30cm + single step (width of the door) ** Add on to External wall insulation + Shiplap cladding option.

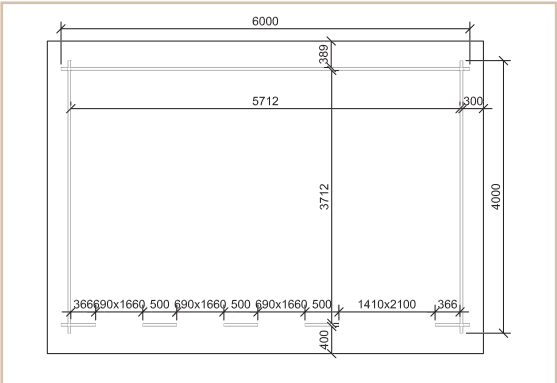
Wexford



FREE
GERMAN MADE
'SCHUCO' PVC
WINDOW & DOOR UPGRADE
(WHILE STOCK LAST)

Price includes:

- FREE** steel roofing tiles
- FREE** damp proof membrane
- FREE** 50mm floor insulation
- FREE** double glazed windows & doors
- FREE** weathering package
- Delivered in flatpack



Cabin Details:	
Wall thickness	45mm
Size	6m x 3m, 6m x 4m,
Doors	Premium living type door
Windows	Premium living type windows
Roof	Steel roof tiles
Ridge height	2600mm
Wall height	2340mm
Floor bearers	45mm x 50mm

Price	€9,270	€10,460
Available upgrades	6m x 3m	6m x 4m
Cabin assembly	€1,350	€1,900
Timber frame & block foundation*	€1,140	€1,570
100m roof insulation	€530	€680
Wall insulation & T&G cladding	€1,830	€1,980
External insulation & Shiplap cladding	€2,190	€2,370
Laminated flooring	€720	€1,040
External painting (excl. paint)	€830	€920
External + Internal (excl. paint)	€1,320	€1,550
Gutter & downpipe	€180	€180
Thermowood cladding**	€1,490	€1,660
Charred cladding**	€2,400	€2,740



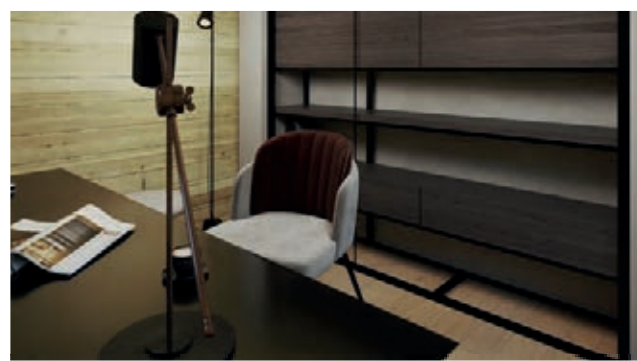
* Includes foundation cover up to 30cm + single step (width of the door)
 ** Add on to External wall insulation + Shiplap cladding option.

Louth Contemporary Log Cabin

4m x 3m



FREE
GERMAN MADE
SCHUCO® PVC
WINDOW & DOOR UPGRADE
(WHILE STOCK LAST)



Price
€12,190

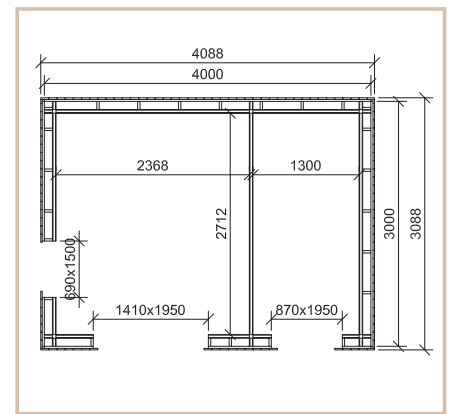
Delivered &
assembled

Price includes:

FREE damp proof
membrane

FREE roof & floor insulation
(value of €600)

FREE weathering package



Cabin Details:

Wall thickness	200mm
Size	4m x 3m (13ft x 9.8ft)
Doors	Premium living type door
Windows	Premium living type windows
Roof	Steel roof
Ridge height	2470mm
Wall height	2210mm
Floor bearers	50mm x 45mm

* Includes foundation cover up to 30cm + single step (width of the door)

** Add on to External wall insulation + Shiplap cladding option.

Available Upgrades:

Cabin assembly	Included
Timber frame & block foundation	€1,000
Living type windows & doors	Included
Wall insulation & T&G cladding	Included
Laminated flooring	€470
External painting (excl. paint)	€520
External + Internal (excl. paint)	€1,000
Upgrade to steel roof tiles	Included
Gutter & downpipe	€120
Thermowood cladding**	€1,250
Charred cladding	€1,890

Clontarf Contemporary Log Cabin

5m x 4m

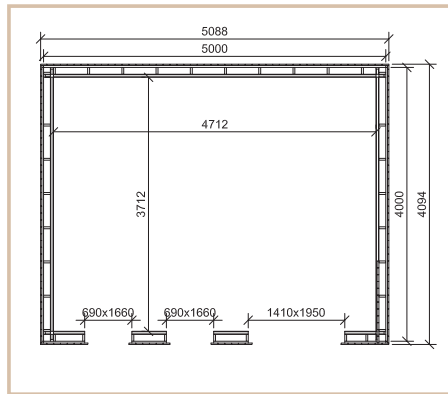
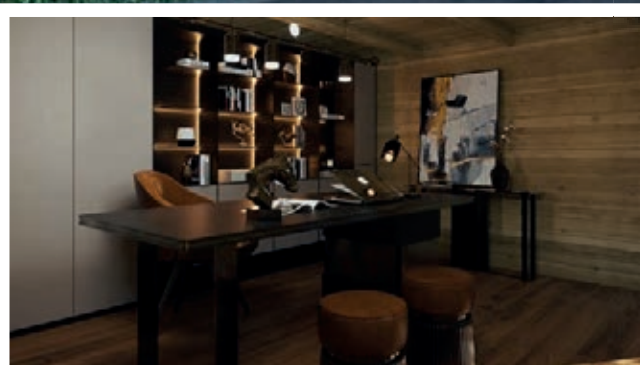


Price
€14,470

Delivered & assembled

Price includes:

- FREE** damp proof membrane
- FREE** roof & floor insulation (value of €1,000)
- FREE** weathering package



Cabin Details: Available Upgrades:

Wall thickness	200mm
Size	5m x 4m (16.4ft x 13ft)
Doors	Premium living type door
Windows	Premium living type windows
Roof	Steel roof
Ridge height	2470mm
Wall height	2210mm
Floor bearers	50mm x 45mm

Cabin assembly	Included
Timber frame & block foundation*	€1,420
Living type windows & doors	Included
Wall insulation & T&G cladding	Included
Laminated flooring	€780
External painting (excl. paint)	€820
External + Internal (excl. paint)	€1,550
Upgrade to steel roof tiles	Included
Gutter & downpipe	€150
Thermowood cladding**	€1,600
Charred cladding	€4,430

* Includes foundation cover up to 30cm + single step (width of the door)
** Add on to External wall insulation + Shiplap cladding option.

Ashford Contemporary Log Cabin

4m x 3m, 4m x 4m



FREE
GERMAN MADE
SCHUCO PVC
WINDOW & DOOR UPGRADE
(WHILE STOCK LAST)

Price includes:

FREE damp proof membrane

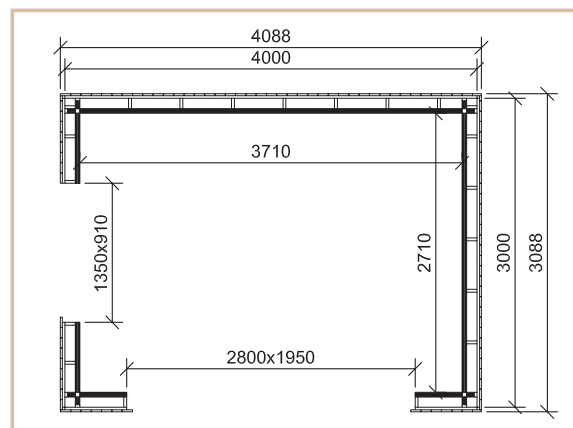
FREE roof & floor insulation
(value of €600)

FREE weathering package



Cabin Details:

Wall thickness	200mm
Size	4m x 3m (13ft x 9.8ft), 4m x 4m (13ft x 13ft)
Doors	Premium living type door
Windows	Premium living type windows
Roof	Steel roof
Ridge height	2470mm
Wall height	2210mm
Floor bearers	50mm x 45mm



* Includes foundation cover up to 30cm + single step (width of the door)

** Add on to External wall insulation + Shiplap cladding option.

Price

€11,370

€13,170

Available upgrades

4m x 3m

4m x 4m

	4m x 3m	4m x 4m
Cabin assembly	Included	Included
Timber frame & block foundation*	€940	€1,140
Living type windows & doors	Included	Included
Wall insulation & T&G cladding	Included	Included
Upgrade to steel roof tiles	Included	Included
Laminate flooring	€470	€625
External painting (excl. paint)	€520	€640
External + Internal (excl. paint)	€1,000	€1,200
Gutter & downpipe	€120	€120
Thermowood cladding**	€1,250	€1,430
Charred cladding	€1,890	€2,160

BBQ House 6.5m x 3.25m



FREE
GERMAN MADE
'SCHUCHO' PVC
WINDOW & DOOR UPGRADE
(WHILE STOCK LAST)

Price **€12,410**

Delivered in flatpack



Price includes:

- FREE** steel roofing tiles (value of €1060)
- FREE** damp proof membrane
- FREE** 50mm floor insulation (value of €780)
- FREE** weathering package
- FREE** external wall insulation & shiplap cladding

Cabin Details:

Walls	45mm
Size	6.5m x 3.25m (21.3ft x 10.6ft)
Doors	Frameless sliding glass panels
Windows	Frameless sliding glass panels
Roof	Steel roof tiles
Ridge height	2600mm
Wall height	2210mm
Floor bearers	50mm x 100mm

* Includes foundation cover up to 30cm + single step (width of the door).

** Add on to External wall insulation + Shiplap cladding option.

Available Upgrades:

Cabin assembly	€1,590
Timber frame & block foundation*	€1,210
100mm roof insulation	€610
Upgrade to 58mm wall thickness	€900
Wall insulation & T&G cladding	N/A
External painting (excl. paint)	N/A
External + Internal painting (excl. paint)	N/A
Gutters & downpipes	€200
Thermowood cladding**	N/A



FREE
GERMAN MADE
'SCHÜCO' PVC
WINDOW & DOOR UPGRADE
(WHILE STOCK LAST)

Budget One Bed B

6m x 5.2m



Price

€15,870

Delivered in flatpack

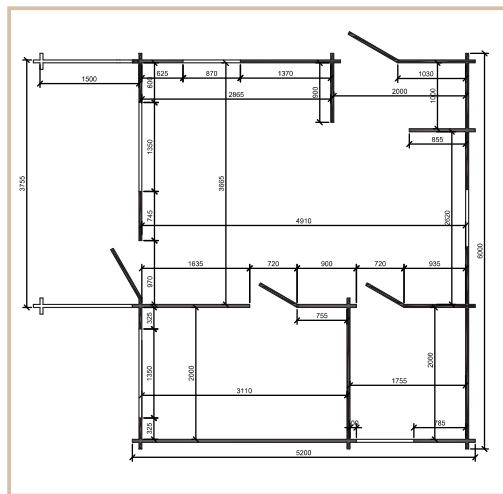
Price includes:

FREE steel roofing tiles
(value of €1060)

FREE damp proof
membrane

FREE 100mm floor
insulation (value of €780)

FREE weathering
package



Cabin Details:

Walls	45mm
Size	6m x 5.2m (19.7ft x 17ft)
Doors	Premium living type doors
Windows	Premium living type windows
Roof	Steel roof tiles
Ridge height	2930mm
Wall height	2210mm
Floor bearers	50mm x 100mm

* Includes foundation cover up to 30cm + single step (width of the door).

** Add on to External wall insulation + Shiplap cladding option.

Available Upgrades:

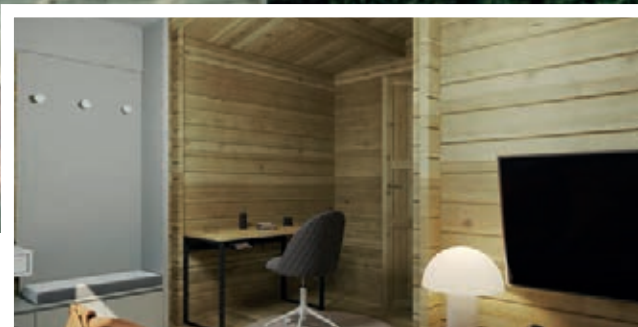
Cabin assembly	€2,260
Timber frame & block foundation*	€1,980
100mm roof insulation	€840
Wall insulation & T&G cladding	€2,090
External wall insulation & Shiplap cladding	€2,590
Laminated flooring	€1,215
External painting (excl. paint)	€1,170
External + Internal painting (excl. paint)	€2,390
Gutters & downpipes	€360
Thermowood cladding**	€1,930
Charred cladding	€3,210

Budget One Bed C 4m x 7m



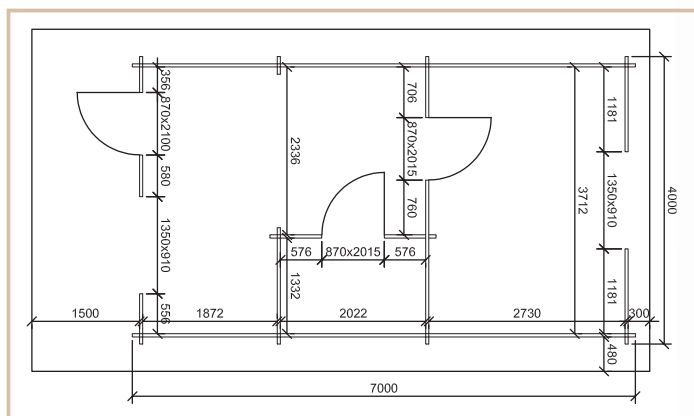
Price includes:

- FREE** steel roofing tiles (value of €1060)
- FREE** damp proof membrane
- FREE** 100mm floor insulation (value of €780)
- FREE** weathering package



Price **€13,960**

Delivered in flatpack



Cabin Details:

Walls	45mm
Size	4m x 7m (13.1ft x 23ft)
Doors	Premium living type doors
Windows	Premium living type windows
Roof	Steel roof tiles
Ridge height	2665mm
Wall height	2275mm
Floor bearers	50mm x 100mm

* Includes foundation cover up to 30cm + single step (width of the door).
 ** Add on to External wall insulation + Shiplap cladding option.

Available Upgrades:

Cabin assembly	€2,100
Timber frame & block foundation*	€1,710
100mm roof insulation	€940
Wall insulation & T&G cladding	€2,230
External wall insulation & Shiplap cladding	€2,670
Laminated flooring	€1,100
External painting (excl. paint)	€1,210
External + Internal painting (excl. paint)	€2,590
Gutters & downpipes	€510
Thermowood cladding**	€1,910
Charred cladding	€2,960

Budget One Bed D 7m x 4m



Price **€13,640**

Delivered in flatpack

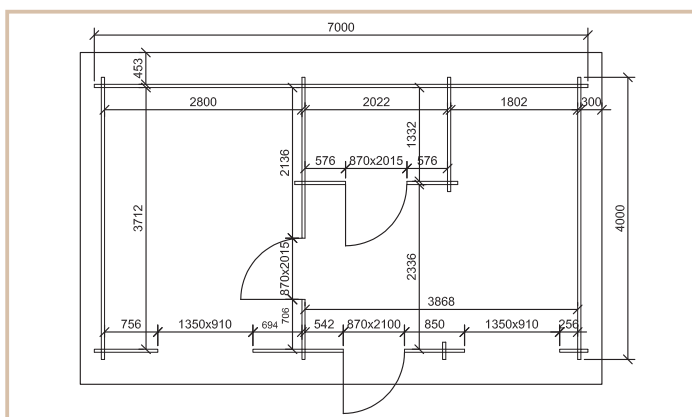
Price includes:

FREE steel roofing tiles (value of €1060)

FREE damp proof membrane

FREE 100mm floor insulation (value of €780)

FREE weathering package



Cabin Details:

Walls	45mm
Size	7m x 4m (23ft x 13.1ft)
Doors	Premium living type doors
Windows	Premium living type windows
Roof	Steel roof tiles
Ridge height	2730mm
Wall height	2340mm
Floor bearers	50mm x 100mm

* Includes foundation cover up to 30cm + single step (width of the door).

** Add on to External wall insulation + Shiplap cladding option.

Available Upgrades:

Cabin assembly	€2,100
Timber frame & block foundation*	€1,710
100mm roof insulation	€790
Wall insulation & T&G cladding	€2,230
External wall insulation & Shiplap cladding	€2,670
Laminated flooring	€1,100
External painting (excl. paint)	€1,210
External + Internal painting (excl. paint)	€2,590
Gutters & downpipes	€420
Thermowood cladding**	€1,910
Charred cladding	€3,010

Budget One Bed E

6m x 5m



FREE
GERMAN MADE
'SCHUCO' PVC
WINDOW & DOOR UPGRADE
(WHILE STOCK LAST)

Price includes:

FREE steel roofing tiles (value of €1060)

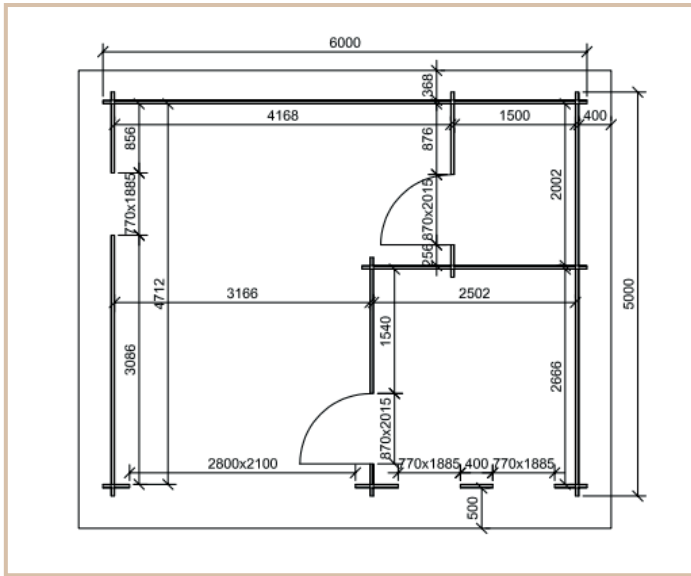
FREE damp proof membrane

FREE 100mm floor insulation (value of €780)

FREE weathering package

Price **€16,720**

Delivered in flatpack



Cabin Details:

Walls	45mm
Size	6m x 5m (19.7ft x 16.4ft)
Doors	Premium living type doors
Windows	Premium living type windows
Roof	Steel roof tiles
Ridge height	2340mm
Wall height	2860mm
Floor bearers	50mm x 100mm

* Includes foundation cover up to 30cm + single step (width of the door).
** Add on to External wall insulation + Shiplap cladding option.

Available Upgrades:

Cabin assembly	€2,250
Timber frame & block foundation*	€1,830
100mm roof insulation	€830
Wall insulation & T&G cladding	€2,090
External wall insulation & Shiplap cladding	€2,750
Laminated flooring	€1,170
External painting (excl. paint)	€1,170
External + Internal painting (excl. paint)	€2,390
Gutters & downpipes	€180
Thermowood cladding**	€2,380
Charred cladding	€3,120

Budget Two Bed D 9.2m x 5.2m



FREE
GERMAN MADE
'SCHUCO' PVC
WINDOW & DOOR UPGRADE
(WHILE STOCK LAST)

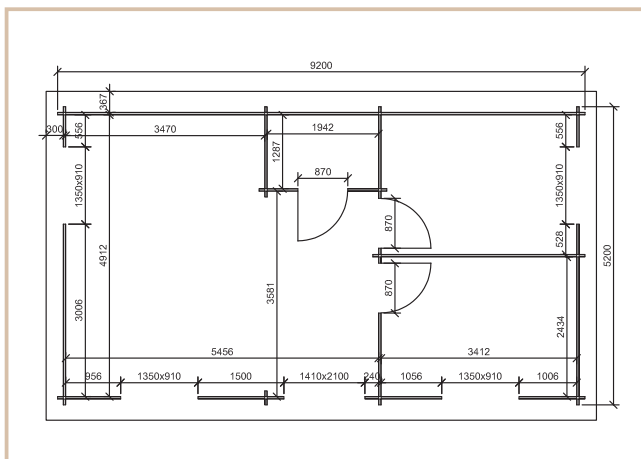


Price includes:

- FREE** steel roofing tiles (value of €2,240)
- FREE** damp proof membrane
- FREE** 100mm floor insulation (value of €1,800)
- FREE** weathering package

Price **€20,050**

Delivered in flatpack



Cabin Details:

Walls	45mm / 60mm
Size	9.2m x 5.2m (30.2ft x 17ft)
Windows	Premium living type doors
Doors	Premium living type windows
Roof	Steel roof tiles
Ridge height	2665mm
Wall height	2200mm
Floor bearers	50mm x 100mm

Available Upgrades:

Cabin assembly	€3,450
Timber frame & block foundation*	€3,020
100mm roof insulation	€1,630
Wall insulation & T&G cladding	€2,820
External wall insulation & Shiplap cladding	€3,390
Laminated flooring	€1,865
External painting (excl. paint)	€1,810
External + Internal painting (excl. paint)	€3,250
Gutters & downpipes	€550
Upgrade to 60mm log	€2,000
Thermowood cladding**	€2,360
Charred cladding	€3,950

* Includes foundation cover up to 30cm + single step (width of the door).

** Add on to External wall insulation + Shiplap cladding option.



FREE
GERMAN MADE
"SCHUCHO" PVC
WINDOW & DOOR UPGRADE
(WHILE STOCK LAST)

Budget Two Bed A

5.2m x 8.2m + 2.0m veranda

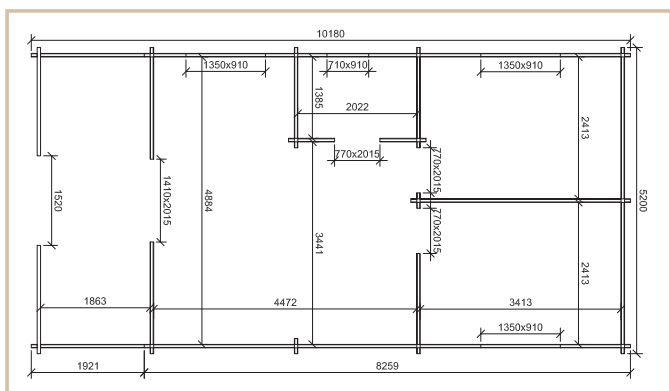
Price **€18,710**

Delivered in flatpack



Price includes:

- FREE** steel roofing tiles (value of €1,330)
- FREE** damp proof membrane
- FREE** 100mm floor insulation (value of €1,080)
- FREE** weathering package



Cabin Details:

Walls	45mm / 60mm
Size	5.2m x 8.2m + 1.8m (17ft x 26.9ft + 5.9ft)
Doors	Premium living type door
Windows	Premium living type windows
Roof	Steel roof tiles
Ridge height	2665mm
Wall height	2220mm
Floor bearers	50mm x 100mm

* Includes foundation cover up to 30cm + single step (width of the door).
** Add on to External wall insulation + Shiplap cladding option.

Available Upgrades:

Cabin assembly	€3,220
Timber frame & block foundation*	€3,070
100mm roof insulation	€1,450
Wall insulation & T&G cladding	€2,570
External wall insulation & Shiplap cladding	€3,080
Laminated flooring	€1,660
External painting (excl. paint)	€1,450
External + Internal painting (excl. paint)	€2,700
Gutters & downpipes	€600
Upgrade to 60mm log	€2,050
Thermowood cladding**	€2,120
Charred cladding	€3,620

Budget Two Bed C 10m x 7m



FREE
GERMAN MADE
'SCHUCO' PVC
WINDOW & DOOR UPGRADE
(WHILE STOCK LAST)



Price includes:

- FREE** steel roofing tiles (value of €2,240)
- FREE** damp proof membrane
- FREE** 100mm floor insulation (value of €1,800)
- FREE** weathering package

Price **€28,330**

Delivered in flatpack



Cabin Details:

Walls	45mm / 60mm
Size	10m x 7m (33.5ft x 23ft)
Windows	Premium living type doors
Doors	Premium living type windows
Roof	Steel roof tiles
Ridge height	3180mm
Wall height	2200mm
Floor bearers	50mm x 100mm

Available Upgrades:

Cabin assembly	€5,350
Timber frame & block foundation*	€4,090
100mm roof insulation	€1,820
Wall insulation & T&G cladding	€3,600
External wall insulation & Shiplap cladding	€4,330
Laminated flooring	€2,730
External painting (excl. paint)	€1,890
External + Internal painting (excl. paint)	€3,850
Gutters & downpipes	€600
Upgrade to 60mm log	€3,000
Thermowood cladding**	€3,050
Charred cladding	€5,130

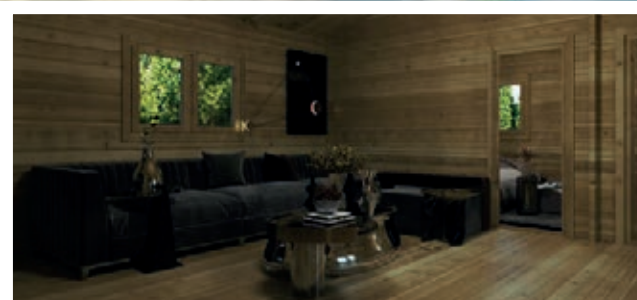
* Includes foundation cover up to 30cm + single step (width of the door).

** Add on to External wall insulation + Shiplap cladding option.

Budget Three Bed A 10.2m x 7m



FREE
GERMAN MADE
'SCHUCHO' PVC
WINDOW & DOOR UPGRADE
(WHILE STOCK LAST)



Price includes:

FREE steel roofing tiles (value of €2,240)

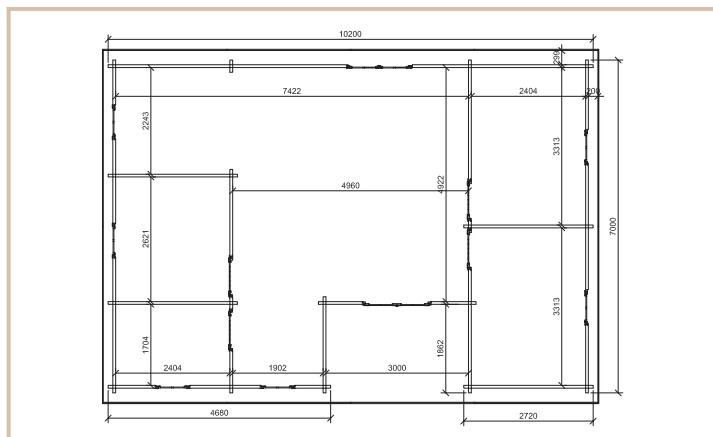
FREE damp proof membrane

FREE 100mm floor insulation (value of €1,800)

FREE weathering package

Price **€27,510**

Delivered in flatpack



Cabin Details:

Walls	45mm / 60mm
Size	10.2m x 7m (33.5ft x 23ft)
Windows	Premium living type doors
Doors	Premium living type windows
Roof	Steel roof tiles
Ridge height	3180mm
Wall height	2350mm
Floor bearers	50mm x 100mm

Available Upgrades:

Cabin assembly	€5,350
Timber frame & block foundation*	€4,090
100mm roof insulation	€1,850
Wall insulation & T&G cladding	€3,600
External wall insulation & Shiplap cladding	€4,330
Laminated flooring	€2,785
External painting (excl. paint)	€1,800
External + Internal painting (excl. paint)	€3,750
Gutters & downpipes	€620
Upgrade to 60mm log	€3,000
Thermowood cladding**	€3,060
Charred cladding	€5,070

* Includes foundation cover up to 30cm + single step (width of the door).

** Add on to External wall insulation + Shiplap cladding option.

All visuals shown are for illustrations purposes. Actual cabin cabin details may vary.

WWW.LOGHOUSE.IE [f/LOGHOUSE.IE](https://www.facebook.com/loghouse.ie)

Budget Four Bed A 8m x 14m



FREE
GERMAN MADE
"SCHUCO" PVC
WINDOW & DOOR UPGRADE
(WHILE STOCK LAST)

Price
€45,990

Delivered in flatpack

Price includes:

- FREE** steel roofing tiles (value of €3,110)
- FREE** 100mm floor insulation (value of €2,800)
- FREE** damp proof membrane
- FREE** weathering package



Cabin Details:

Walls	45mm / 60mm
Size	8m x 14m (26.5ft x 46ft)
Doors	Premium living type doors
Windows	Premium living type windows
Roof	Steel roof tiles
Ridge height	3300mm
Wall height	2200mm
Floor bearers	50mm x 100mm

* Includes foundation cover up to 30cm + single step (width of the door).

** Add on to External wall insulation + Shiplap cladding option.

Available Upgrades:

Cabin Assembly	€8,500
Foundation	€POA
Roof insulation	€3,260
External wall insulation + shiplap cladding	€5,600
Laminated flooring	€4,370
External painting (excl. paint)	€2,550
External + internal painting (excl. paint)	€5,350
Gutters & downpipes	€840
Upgrade to 60mm log	€4,800
Thermowood cladding**	€4,120
Charred cladding	€6,660

Budget Four Bed B 9m x 15.5m



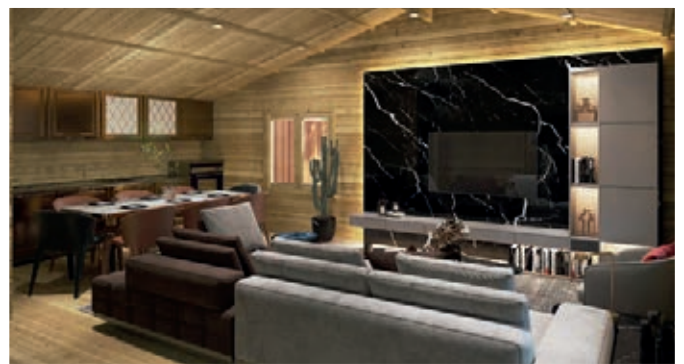
FREE
GERMAN MADE
'SCHUCO' PVC
WINDOW & DOOR UPGRADE
(WHILE STOCK LAST)

Price
€49,980

Delivered in flatpack

Price includes:

- FREE** steel roofing tiles (value of €3,820)
- FREE** 100mm floor insulation (value of €3,490)
- FREE** damp proof membrane
- FREE** weathering package



Cabin Details:

Walls	45mm / 60mm
Size	9m x 15.5m (29.5ft x 51ft)
Doors	Premium living type doors
Windows	Premium living type windows
Roof	Steel roof tiles
Ridge height	3500mm
Wall height	2200mm
Floor bearers	50mm x 100mm

* Includes foundation cover up to 30cm + single step (width of the door)
** Add on to External wall insulation + Shiplap cladding option.

Available Upgrades:

Cabin Assembly	€10,500
Foundation	€POA
Roof insulation	€3,500
External wall insulation + shiplap cladding	€6,240
Laminated flooring	€5,440
External painting (excl. paint)	€2,850
External + internal painting (excl. paint)	€5,850
Gutters & downpipes	€930
Upgrade to 60mm log	€5,000
Thermowood cladding**	€4,330
Charred cladding	€7,620

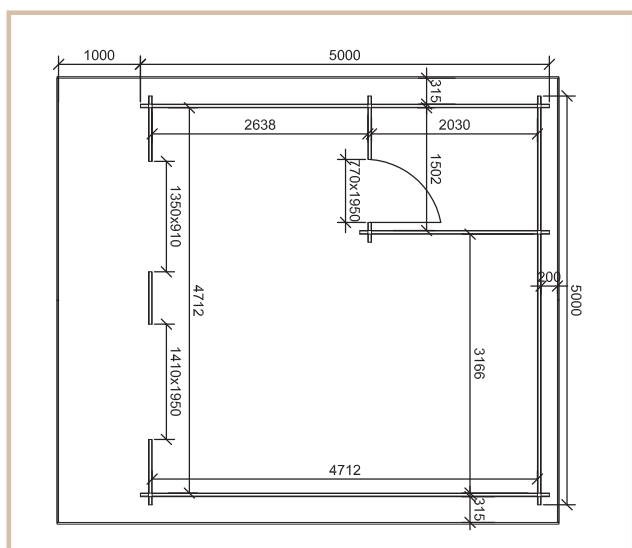
Dublin Studio 5m x 5m + 1m overhang



FREE
GERMAN MADE
'SCHUCO' PVC
WINDOW & DOOR UPGRADE
(WHILE STOCK LAST)



Price **€14,800**
Delivered & assembled



Price includes:

- FREE** steel roof tiles (€860)
- FREE** 100mm floor and roof insulation (€1,400)
- FREE** weathering package

Cabin Details:

Wall thickness	45mm
Size	5m x 5m (16.4ft x 16.4ft)
Doors	Premium living type doors
Windows	Premium living type windows
Roof	Steel roof tiles
Ridge height	2535mm
Wall height	2145mm
Floor bearers	50mm x 100mm

* Includes foundation cover up to 30cm + single step (width of the door).
** Add on to External wall insulation + Shiplap cladding option.

Available Upgrades:

Timber frame & block foundation*	€1,650
Wall insulation & T&G cladding	€1,980
External wall insulation & Shiplap cladding	€2,370
Laminated flooring	€975
External painting (excl. paint)	€850
External + Internal painting (excl. paint)	€1,700
Upgrade to steel roof	€810
Gutters & downpipes	€360
Veranda	€350
Thermowood cladding**	€1,650
Charred cladding	€2,690

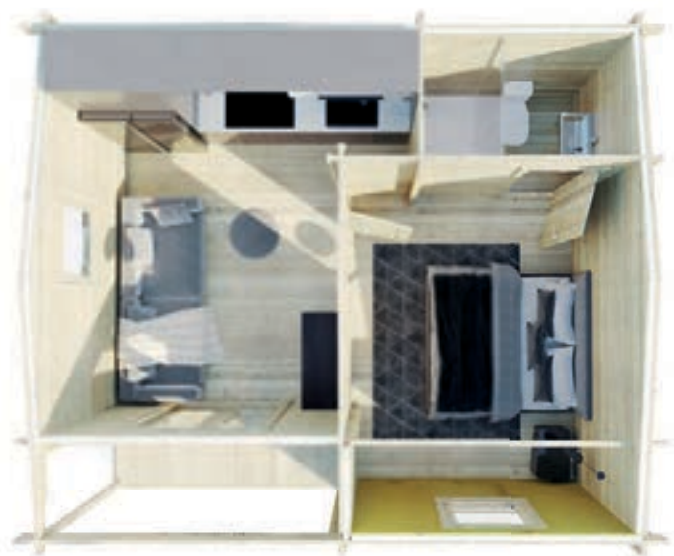
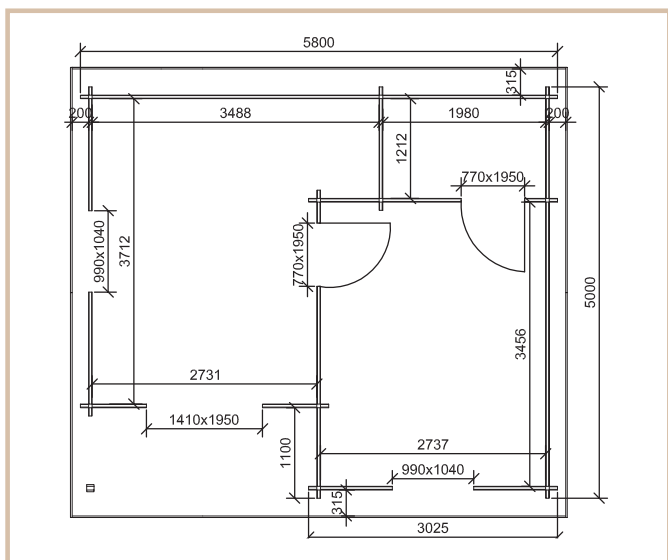
One Bed Type C 5.8m x 5m



Price
€16,620

Delivered & assembled

Price includes:
FREE 100mm floor and roof insulation (€1,510)
FREE steel roof upgrade (€810)
FREE weathering package



Cabin Details:

Wall thickness	45mm
Size	5.8m x 5m (19ft x 16.4ft)
Doors	Premium living type doors
Windows	Premium living type windows
Roof	Steel roof tiles
Ridge height	2600mm
Wall height	2210mm
Floor bearers	50mm x 100mm

Available Upgrades:

Timber frame & block foundation*	€1,750
Wall insulation & T&G cladding	€2,190
External wall insulation & Shiplap cladding	€2,630
Laminated flooring	€1,015
External painting (excl. paint)	€1,210
External + Internal painting (excl. paint)	€2,590
Gutters & downpipes	€360
Thermowood cladding**	€1,800
Charred cladding	€2,960

* Includes foundation cover up to 30cm + single step (width of the door) ** Add on to External wall insulation + Shiplap cladding option.

One Bed Type E 5.0m x 5.8m + 1.5m veranda



Price
€17,220

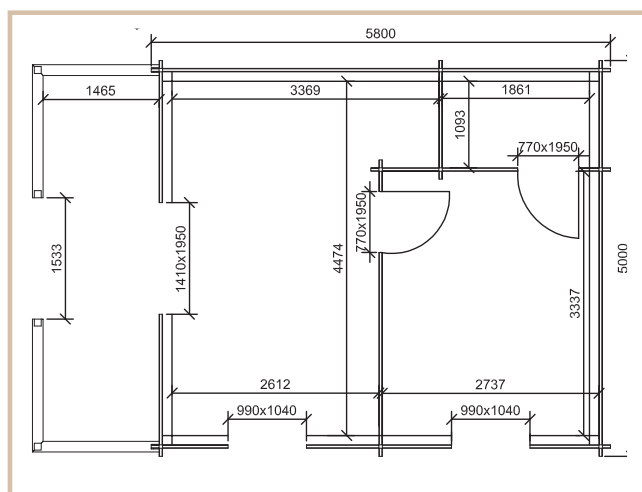
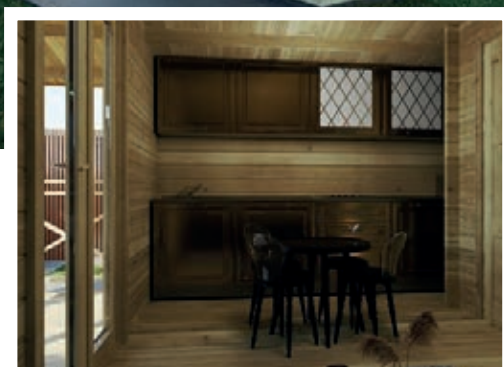
Delivered & assembled

Price includes:

FREE 100mm floor and roof insulation (€1,510)

FREE steel roof upgrade (€810)

FREE weathering package



Cabin Details:

Wall thickness	45mm
Size	5.0m x 5.8m + 1.5m (16.4ft x 19ft +5ft)
Doors	Premium living type doors
Windows	Premium living type windows
Roof	Steel roof tiles
Ridge height	2600mm
Wall height	2210mm
Floor bearers	50mm x 100mm

Available Upgrades:

Timber frame & block foundation*	€2,180
Wall insulation & T&G cladding	€2,190
External wall insulation & Shiplap cladding	€2,630
Laminated flooring	€1,130
External painting (excl. paint)	€1,330
External + Internal painting (excl. paint)	€2,650
Gutters & downpipes	€440
Thermowood cladding**	€1,800
Charred cladding	€2,960

* Includes foundation cover up to 30cm + single step (width of the door) ** Add on to External wall insulation + Shiplap cladding option.

One Bed Type D 5.8m x 5m



FREE
GERMAN MADE
'SCHUCO' PVC
WINDOW & DOOR UPGRADE
(WHILE STOCK LAST)

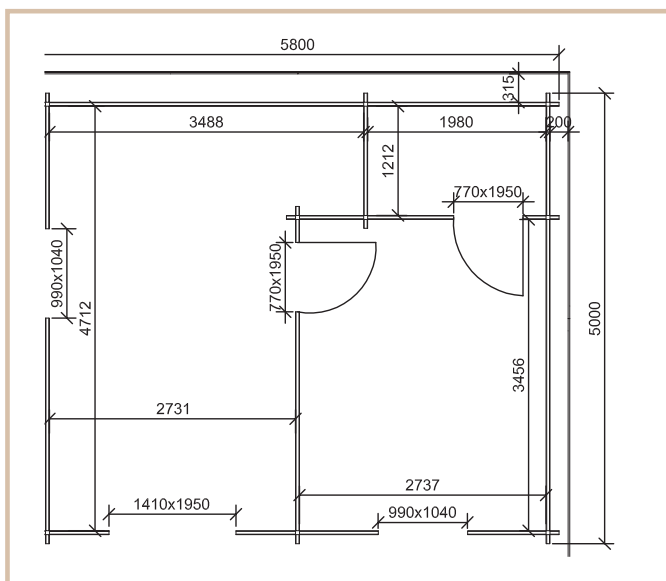


Price
€16,700

Delivered & assembled

Price includes:

- FREE** 100mm floor and roof insulation (€1,510)
- FREE** steel roof upgrade (€810)
- FREE** weathering package



Cabin Details:

Wall thickness	45mm
Size	5.8m x 5m (19ft x 16.4ft)
Doors	Premium living type doors
Windows	Premium living type windows
Roof	Steel roof tiles
Ridge height	2600mm
Wall height	2210mm
Floor bearers	50mm x 100mm

Available Upgrades:

Timber frame & block foundation*	€1,760
Wall insulation & T&G cladding	€2,190
External wall insulation & Shiplap cladding	€2,630
Laminated flooring	€1130
External painting (excl. paint)	€1,210
External + Internal painting (excl. paint)	€2,590
Gutters & downpipes	€360
Thermowood cladding**	€1,800
Charred cladding	€2,960

* Includes foundation cover up to 30cm + single step (width of the door) ** Add on to External wall insulation + Shiplap cladding option.



FREE
GERMAN MADE
"SCHUCHO" PVC
WINDOW & DOOR UPGRADE
(WHILE STOCK LAST)



Loft Log Cabin A

4.5m x 6m

Price
€19,270

Delivered & assembled

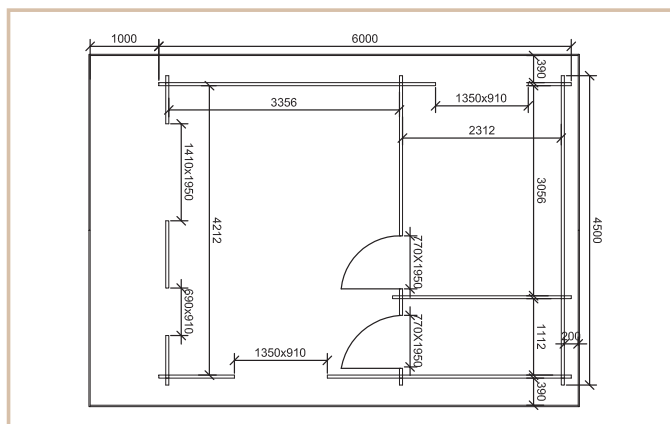
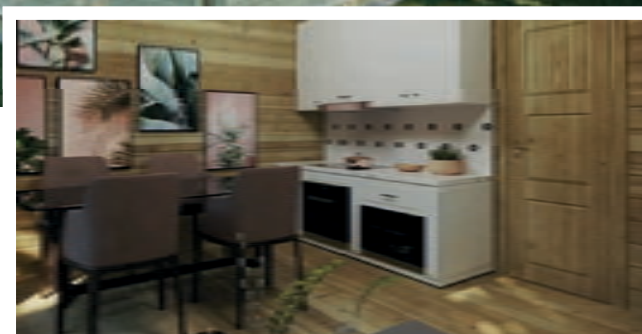
Price includes:

FREE assembly

FREE steel roof upgrade (€860)

FREE 100mm floor and roof insulation (€1,520)

FREE weathering package



Cabin Details:

Wall thickness	45mm
Overall Size	4.5m x 7m (14.8ft x 23ft)
Doors	Premium living type doors
Windows	Premium living type windows
Roof	Steel roof tiles
Ridge height	3705mm
Wall height	2535mm
Floor bearers	50mm x 100mm

Available Upgrades:

Timber frame & block foundation*	€2,000
Wall insulation & T&G cladding	€2,650
External wall insulation & Shiplap cladding	€3,050
External painting (excl. paint)	€1,740
External + Internal painting (excl. paint)	€3,740
Gutters & downpipes	€420
Thermowood cladding**	€2,800
Charred cladding	€3,980

* Includes foundation cover up to 30cm + single step (width of the door) ** Add on to External wall insulation + Shiplap cladding option.

All visuals shown are for illustrations purposes. Actual cabin details may vary.



FREE
GERMAN MADE
'SCHUCO' PVC
WINDOW & DOOR UPGRADE
(WHILE STOCK LAST)



Two Bed Type D

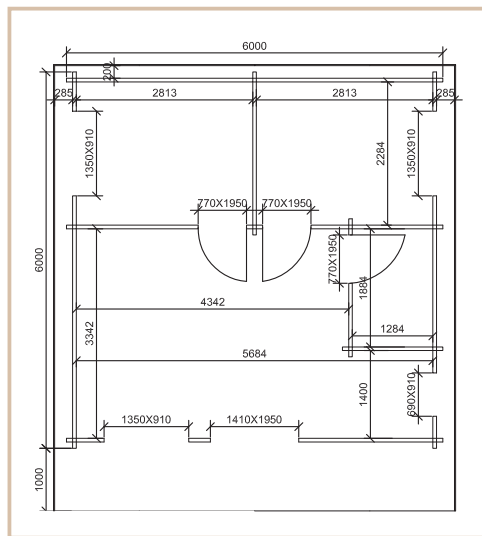
6m x 6m

Price
€23,490

Delivered & assembled

Price includes:

- FREE** assembly
- FREE** steel roof upgrade (€1,090)
- FREE** 100mm floor and roof insulation (€1,960)
- FREE** weathering package



Cabin Details:	
Wall thickness	45mm / 60mm
Size	6m x 6m (19.7ft x 19.7ft)
Doors	Premium living type doors
Windows	Premium living type windows
Roof	Steel roof tiles
Ridge height	2925mm
Wall height	2145mm
Floor bearers	50mm x 100mm

* Includes foundation cover up to 30cm + single step (width of the door)
** Add on to External wall insulation + Shiplap cladding option.

Available Upgrades:	
Timber frame & block foundation	€2,160
Wall insulation & T&G cladding	€2,450
External wall insulation & Shiplap cladding	€2,940
Laminated flooring	€1,405
External painting (excl. paint)	€1,600
External + Internal painting (excl. paint)	€3,340
Gutters & downpipes	€420
Upgrade to 60mm log	€1,700
Thermowood cladding**	€2,010
Charred cladding	€3,340

Two Bed Type E 6m x 7.5m



FREE
GERMAN MADE
'SCHUCHO' PVC
WINDOW & DOOR UPGRADE
(WHILE STOCK LAST)

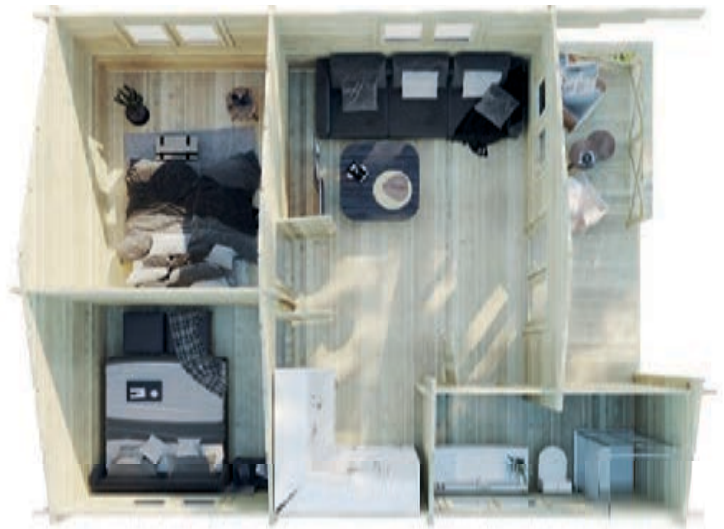
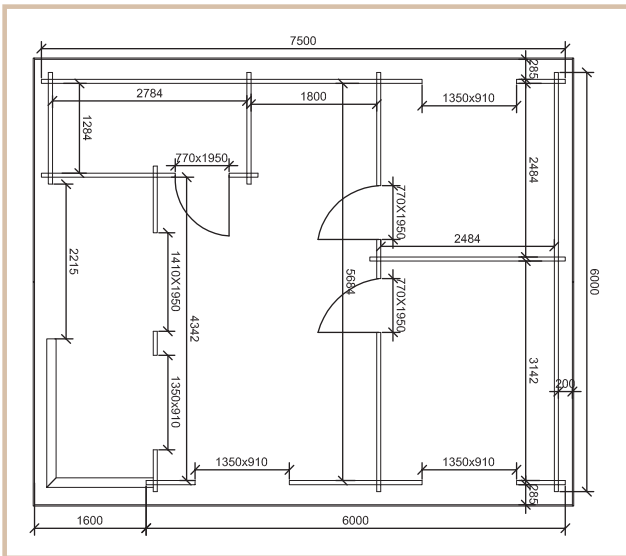


Price
€26,360

Delivered & assembled

Price includes:

- FREE** assembly
- FREE** steel roof upgrade
- FREE** 100mm floor & roof insulation
- FREE** weathering package



Cabin Details:

Wall thickness	45mm / 60mm
Size	6m x 7.5m (19.7ft x 24.6ft)
Doors	Premium living type doors
Windows	Premium living type windows
Roof	Steel roof tiles
Ridge height	2925mm
Wall height	2145mm
Floor bearers	50mm x 100mm

* Includes foundation cover up to 30cm + single step (width of the door).
** Add on to External wall insulation + Shiplap cladding option.

Available Upgrades:

Timber frame & block foundation	€2,660
Wall insulation & T&G cladding	€2,760
External wall insulation & Shiplap cladding	€3,300
Laminated flooring	€1,505
External painting (excl. paint)	€1,800
External + Internal painting (excl. paint)	€3,740
Gutters & downpipes	€450
Upgrade to 60mm log	€1,850
Thermowood cladding**	€2,300
Charred cladding	€3,760



FREE
GERMAN MADE
'SCHÜCO' PVC
WINDOW & DOOR UPGRADE
(WHILE STOCK LAST)



Two Bed Type C

6m x 8m + 1.5m veranda

Price
€29,770

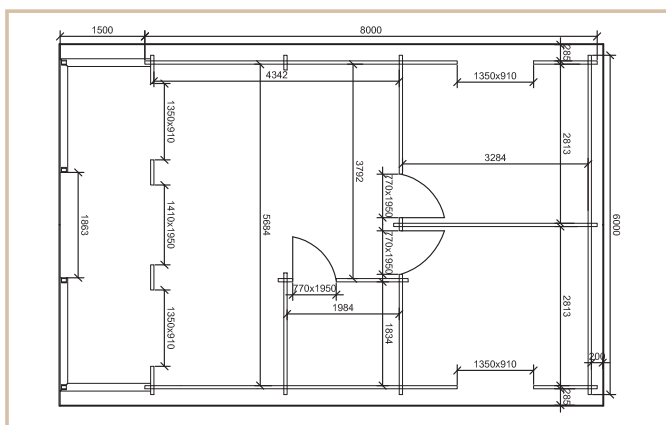
Delivered & assembled

Price includes:

FREE steel roof upgrade (€1,520)

FREE 100mm floor and roof insulation (€2,680)

FREE weathering package



Cabin Details:

Wall thickness	45mm / 60mm
Size	6m x 9.5m (19.7ft x 31.2ft)
Doors	Premium living type doors
Windows	Premium living type windows
Roof	Steel roof tiles
Ridge height	2925mm
Wall height	2145mm
Floor bearers	50mm x 100mm

* Includes foundation cover up to 30cm + single step (width of the door).

** Add on to External wall insulation + Shiplap cladding option.

Available Upgrades:

Timber frame & block foundation*	€2,780
Wall insulation & T&G cladding	€2,890
External wall insulation & Shiplap cladding	€3,460
Laminated flooring	€1,870
External painting (excl. paint)	€1,890
External + Internal painting (excl. paint)	€3,850
Gutters & downpipes	€570
Upgrade to 60mm log	€2,100
Thermowood cladding**	€2,300
Charred cladding	€3,950



FREE
GERMAN MADE
'SCHUCHO' PVC
WINDOW & DOOR UPGRADE
(WHILE STOCK LAST)



Two Bed Type F

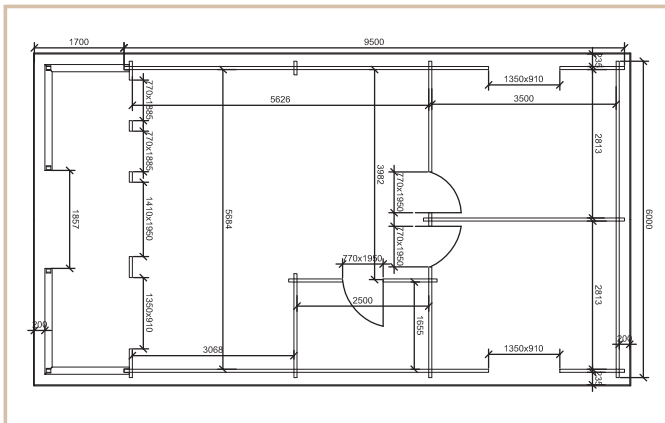
6m x 9.5m + 1.5m veranda

Price
€32,390

Delivered & assembled

Price includes:

- FREE** steel roof upgrade (€1,830)
- FREE** 100mm floor and roof insulation (€3,220)
- FREE** weathering package



Cabin Details:

Wall thickness	45mm / 60mm
Size	6m x 11m (19.7ft x 36ft)
Doors	Premium living type doors
Windows	Premium living type windows
Roof	Steel roof tiles
Ridge height	2925mm
Wall height	2145mm
Floor bearers	50mm x 100mm

* Includes foundation cover up to 30cm + single step (width of the door).
** Add on to External wall insulation + Shiplap cladding option.

Available Upgrades:

Timber frame & block foundation*	€3,250
Wall insulation & T&G cladding	€3,190
External wall insulation & Shiplap cladding	€3,830
Laminated flooring	€2,225
External painting (excl. paint)	€2,670
External + Internal painting (excl. paint)	€4,540
Gutters & downpipes	€660
Upgrade to 60mm log	€2,250
Thermowood cladding**	€2,640
Charred cladding	€4,310

Three Bed Type A 7m x 11m + 1.5m veranda



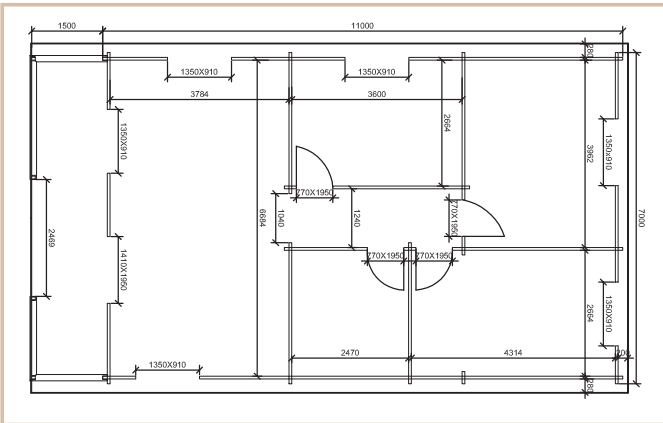
FREE
GERMAN MADE
SCHUCO® PVC
WINDOW & DOOR UPGRADE
(WHILE STOCK LAST)



Price includes:

- FREE** assembly
- FREE** steel roof upgrade (€2,300)
- FREE** weathering package
- FREE** 100mm floor and roof insulation (€4,200)

Price
€42,120
Delivered & assembled



Cabin Details:

Wall thickness	45mm / 60mm
Size	7m x 12.5m (23ft x 41ft)
Doors	Premium living type doors
Windows	Premium living type windows
Roof	Steel roof tiles
Ridge height	3185mm
Wall height	2145mm
Floor bearers	50mm x 100mm

* Includes foundation cover up to 30cm + single step (width of the door).
** Add on to External wall insulation + Shiplap cladding option.

Available Upgrades:

Timber frame & block foundation*	€4,610
Wall insulation & T&G cladding	€3,920
External wall insulation & Shiplap cladding	€4,710
Laminated flooring	€3,005
External painting (excl. paint)	€2,400
External + Internal painting (excl. paint)	€5,070
Gutters & downpipes	€750
Upgrade to 60mm log	€3,200
Thermowood cladding**	€3,180
Charred cladding	€5,520



FREE
GERMAN MADE
'SCHUCO' PVC
WINDOW & DOOR UPGRADE
(WHILE STOCK LAST)



Three Bed Type B

6m x 11m

Price

€37,900

Delivered & assembled

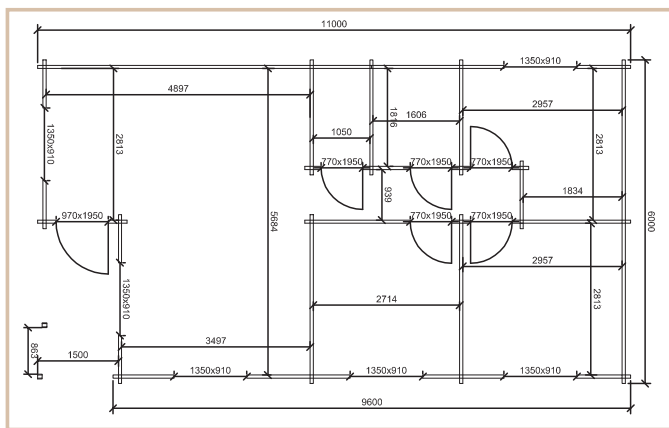
Price includes:

FREE damp proof membrane

FREE steel roof upgrade (€1,750)

FREE 100mm floor and roof insulation (€3,320)

FREE weathering package



Cabin Details:

Walls	45mm / 60mm
Size	6m x 11m (19.7ft x 36ft)
Doors	Premium living type doors
Windows	Premium living type windows
Roof	Steel roof tiles
Ridge height	2925mm
Wall height	2145mm
Floor bearers	45mm x 100mm

* Includes foundation cover up to 30cm + single step (width of the door).

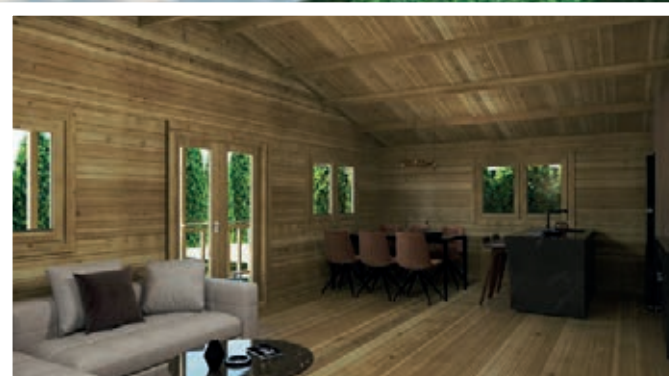
** Add on to External wall insulation + Shiplap cladding option.

Available Upgrades:

Timber frame & block foundation*	€3,250
Wall insulation & T&G cladding	€3,500
External wall insulation & Shiplap cladding	€4,200
Laminated flooring	€2,575
External painting (excl. paint)	€2,400
External + Internal painting (excl. paint)	€5,070
Upgrade to steel roof	Included
Gutters & downpipes	€660
Upgrade to 60mm log	€2,500
Thermowood cladding**	€2,720
Charred cladding	€4,730



FREE
GERMAN MADE
'SCHUCO' PVC
WINDOW & DOOR UPGRADE
(WHILE STOCK LAST)



Four Bed Type A

8m x 12m + 1.5m veranda

Price
€52,290

Delivered & assembled

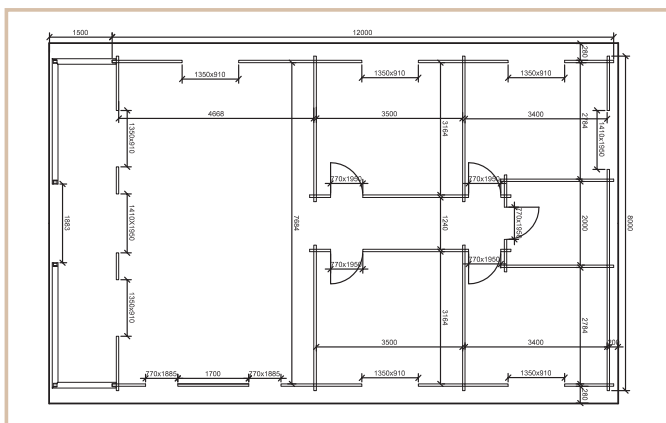
Price includes:

FREE assembly

FREE steel roof upgrade (€2,700)

FREE 100mm floor and roof insulation (€5,100)

FREE weathering package



Cabin Details:

Wall thickness	60mm / 70mm Glulam
Size	8m x 13.5m (26ft x 39ft)
Doors	Premium living type doors
Windows	Premium living type windows
Roof	Steel roof tiles
Ridge height	3185mm
Wall height	2145mm
Floor bearers	50mm x 100mm

* Includes foundation cover up to 30cm + single step (width of the door).

** Add on to External wall insulation + Shiplap cladding option.

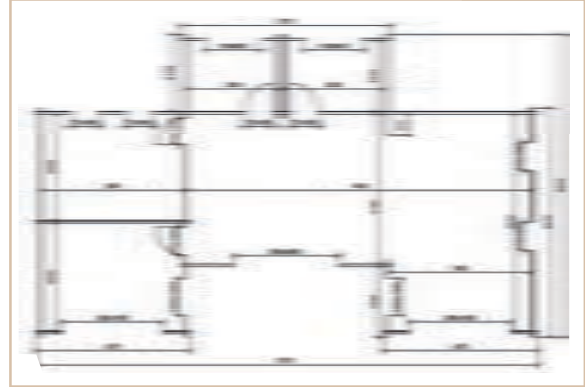
Available Upgrades:

Timber frame & block foundation	€5,200
Wall insulation & T&G cladding	€4,400
External wall insulation & Shiplap cladding	€5,280
Laminated flooring	€3,745
External painting (excl. paint)	€3,050
External + Internal painting (excl. paint)	€5,800
Gutters & downpipes	€810
Upgrade to 60mm log	€2,500
Thermowood cladding**	€3,390
Charred cladding	€5,520

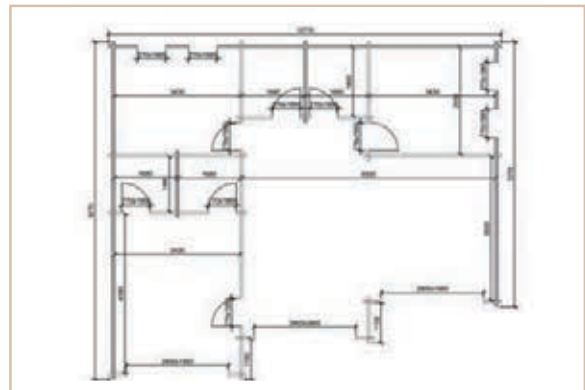
Two, Three & Four Bedroom Contemporary Log Cabins



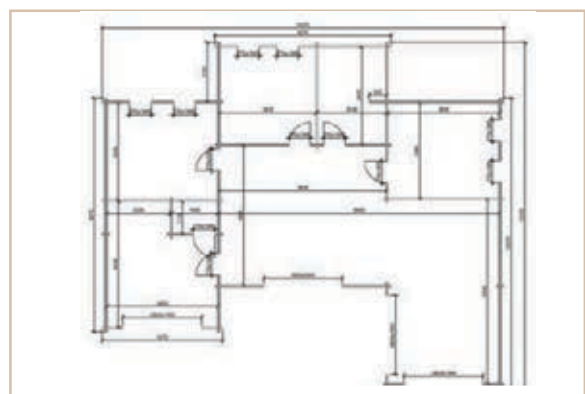
Two Bed 13.7m x 8.2m (44.9ft x 27ft) Price **€74,690**



Three Bed 10.7m x 9.2m (35.1ft x 30.2ft) Price **€75,190**



Four Bed 14.2m x 12.2m (46.5ft x 40ft) Price **€96,190**



Price includes:

Professional assembly service	Roof insulation
60mm solid log walls.	Premium, Glue-laminated windows & doors
Floor insulation	Tile effect steel roof
Wall insulation + T&G cladding	Gutters & downpipes.

Available Upgrades:

Foundation screws	from €90 per m ²
Concrete foundations	P.O.A
70mm Glue-laminated log walls	P.O.A
External wall insulation & shiplap cladding	P.O.A
Professional painting service	P.O.A
Thermowood cladding**	P.O.A

All visuals shown are for illustrations purposes. Actual cabin details may vary.

Glamping Pods

Price includes:
FREE shingle roof tiles

FREE damp proof membrane
FREE 50mm floor insulation

FREE weathering package
FREE delivery in Leinster Area

3m x 3m Price **€5,930**

3m x 4m Price **€6,710**



Available Upgrades:

Pod Assembly	€720
Timber frame and block pad foundation	€630
Laminate Flooring	€350



Available Upgrades:

Pod Assembly	€960
Timber frame and block pad foundation	€840
Laminate Flooring	€470

3m x 5m Price **€8,710**

3m x 6m Price **€9,430**



Available Upgrades:

Pod Assembly	€1,200
Timber frame and block pad foundation	€970
Laminate Flooring	€585



Available Upgrades:

Pod Assembly	€1,440
Timber frame and block pad foundation	€1,130
Laminate Flooring	€700

Price includes:
FREE shingle roof tiles

FREE damp proof membrane
FREE 50mm floor insulation

FREE weathering package
FREE delivery in Leinster Area

4m x 6m
 Price **€11,180**



4m x 8m One Bed A
 Price **€13,630**



Available Upgrades:

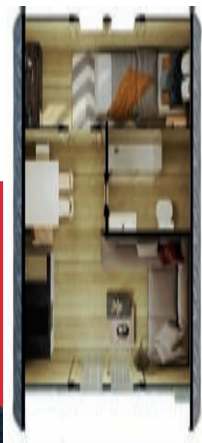
Pod Assembly	€1,800
Timber frame and block pad foundation	€1,460
Laminate Flooring	€935



Available Upgrades:

Pod Assembly	€2,400
Timber frame and block pad foundation	€1,950
Laminate Flooring	€1,250

4m x 8m One Bed B
 Price **€13,940**



4m x 10m Two Bed
 Price **€16,080**



Available Upgrades:

Pod Assembly	€2,400
Timber frame and block pad foundation	€1,950
Laminate Flooring	€1,250



Available Upgrades:

Pod Assembly	€3,000
Timber frame and block pad foundation	€2,400
Laminate Flooring	€1,560

All visuals shown are for illustrations purposes. Actual cabin details may vary.

Saunas

2.5m Mini Sauna | Price €5,290



Available Upgrades:

Sauna Assembly	Included
Timber frame and block pad foundation	Included
Round Glass	€900
Half Glass	€500
Wood Stove	€650
External painting (excl. paint)	€450
Thermowood cladding	€750



3.0m Midi Sauna | Price €5,840



Available Upgrades:

Sauna Assembly	Included
Timber frame and block pad foundation	Included
Round Glass	€900
Half Glass	€500
Wood Stove	€650
External painting (excl. paint)	€450
Thermowood cladding	€960



Sauna Features:

- ✓ Electric Harvia 9kw stove
- ✓ Sauna stones

- ✓ Black Alder benches
- ✓ Tempered glass doors
- ✓ Shingle tile roof

- ✓ Stainless steel tightening hoops
- ✓ Tempered glass doors
- ✓ **FREE delivery in Leinster Area**

4.0m Maxi Sauna | Price €6,930



Available Upgrades:

Sauna Assembly	Included
Timber frame and block pad foundation	Included
Round Glass	€900
Half Glass	€500
Wood Stove	€650
External painting (excl. paint)	€750
Thermowood cladding	€1,230



6.0m Grande Sauna | Price €8,690



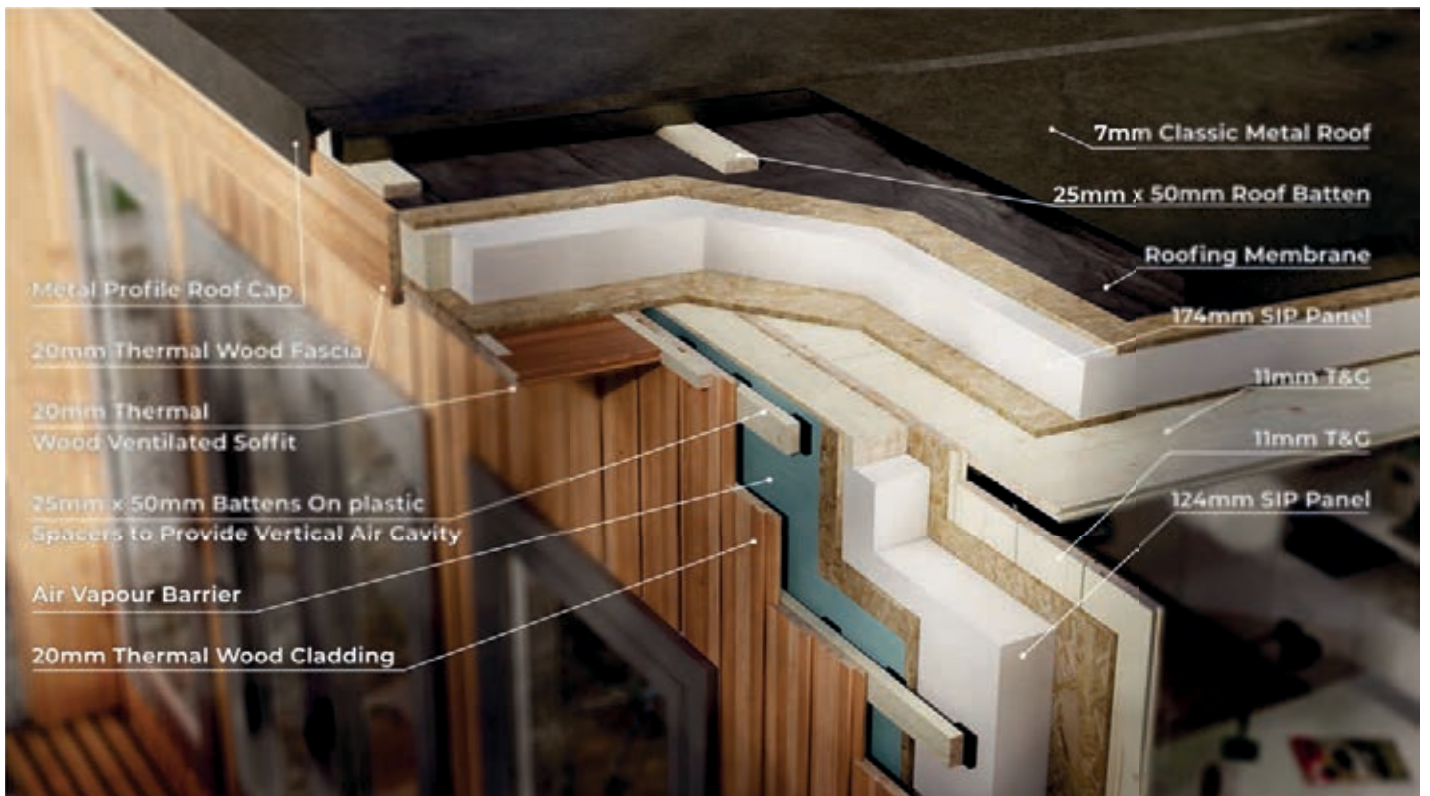
Available Upgrades:

Sauna Assembly	Included
Timber frame and block pad foundation	Included
Round Glass	€900
Half Glass	€500
Wood Stove	€650
External painting (excl. paint)	€750
Thermowood cladding	€1,660





Eco Garden Rooms



3.0m x 3.3m Price **€15,580**



FREE
GERMAN MADE
SCHÜCO PVC
WINDOW & DOOR UPGRADE
(WHILE STOCK LAST)



Exterior oiling (incl. oil)
4.2m x 3.4m € 560; 4.2m x 4.4m €660

Room Details

EPS Insulated (150mm) roof total thickness	217mm
EPS Insulated (100mm) walls total thickness	184mm
Size	3.0m x 3.3m (9.8ft x 10.8ft)
Frame & Foundations	Ground-screws foundation
Flooring	Laminate
Flooring Insulation	EPS 100mm
Windows & Doors	Grey uPVC, double glazed
External Cladding	THERMO WOOD
Roofing System	Grey Insulated Classic Metal
Internal Cladding	11mm T&G
Gutters & Downpipes	Included

4.2m x 3.4m Price **€18,490** | 4.2m x 4.4m Price **€21,330**



FREE
GERMAN MADE
SCHÜCO PVC
WINDOW & DOOR UPGRADE
(WHILE STOCK LAST)



Exterior oiling (incl. oil)
4.2m x 3.4m € 560; 4.2m x 4.4m €660

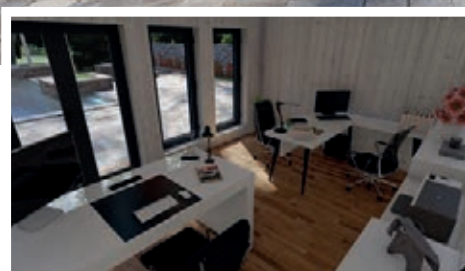
Room Details

EPS Insulated (150mm) roof total thickness	217mm
EPS Insulated (100mm) walls total thickness	184mm
Size	4.2m x 3.4m (13.7ft x 11.1ft) 4.2m x 4.4m (13.7ft x 14.4ft)
Frame & Foundations	Ground-screws foundation
Flooring	Laminate
Flooring Insulation	EPS 100mm
Windows & Doors	Grey uPVC, double glazed
External Cladding	THERMO WOOD
Roofing System	Grey Insulated Classic Metal
Internal Cladding	11mm T&G
Gutters & Downpipes	Included

5.2m x 3.4m Price **€20,960** | 5.2m x 4.4m Price **€23,200**



FREE
GERMAN MADE
'SCHUCO' PVC
WINDOW & DOOR UPGRADE
(WHILE STOCK LAST)



Exterior oiling (incl. oil)
5.2m x 3.4m € 640; 5.2m x 4.4m €760

Room Details

EPS Insulated (150mm) roof total thickness	217mm
EPS Insulated (100mm) walls total thickness	184mm
Size	5.2m x 4.4m (17.1ft x 14.4ft) 5.2m x 3.4m (17.1ft x 11.1ft)
Frame & Foundations	Ground-screws foundation
Flooring	Laminate
Flooring Insulation	EPS 100mm
Windows & Doors	Grey uPVC, double
External Cladding	THERMO WOOD
Roofing System	Grey Insulated Classic Metal
Internal Cladding	11mm T&G
Gutters & Downpipes	Included

6.2m x 3.4m Price **€21,199** | 6.2m x 4.4m Price **€24,279**



FREE
GERMAN MADE
'SCHUCO' PVC
WINDOW & DOOR UPGRADE
(WHILE STOCK LAST)



Exterior oiling (incl. oil)
6.2m x 3.4m € 720; 6.2m x 4.4m €860

Room Details

EPS Insulated (150mm) roof total thickness	217mm
EPS Insulated (100mm) walls total thickness	184mm
Size	6.2m x 4.4m (20.3ft x 14.4ft) 6.2m x 3.4m (20.3ft. x 11.1ft)
Frame & Foundations	Ground-screws foundation
Flooring	Laminate
Flooring Insulation	EPS 100mm
Windows & Doors	Grey uPVC, double
External Cladding	THERMO WOOD
Roofing System	Grey Insulated Classic Metal
Internal Cladding	11mm T&G
Gutters & Downpipes	Included

Studio Eco Garden Room



FREE
GERMAN MADE
SCHUCO PVC
WINDOW & DOOR UPGRADE
(WHILE STOCK LAST)

5.0m x 4.0m Price **€25,900**

6.0m x 4.0m Price **€28,900**

Room Details

EPS Insulated (150mm) roof total thickness	217mm
EPS Insulated (100mm) walls total thickness	184mm
Size	5.0m x 4.0m (16.4ft x 13.1ft) 6.0m x 4.0m (19.6ft x 13.1ft)
Wall Height	2,200m
Ridge Height	2900mm/3200mm
Frame & Foundations	Ground-screws foundation
Flooring	Laminate
Flooring Insulation	EPS 100mm
Windows & Doors	Grey uPVC, double
External Cladding	THERMO WOOD
Roofing System	Grey Insulated Classic Metal
Internal Cladding	11mm T&G
Gutters & Downpipes	Included
External painting (incl. oil)	€760/ €860
External + Internal painting (Internal & external (incl. oil and internal paint/stain)	€1,420/ €1,620



One Bed Eco Garden Room

5.3m x 7.5m



FREE
GERMAN MADE
'SCHUCO' PVC
WINDOW & DOOR UPGRADE
(WHILE STOCK LAST)

Price **€39,999**

Room Details

EPS Insulated (150mm) roof total thickness	217mm
EPS Insulated (100mm) walls total thickness	184mm
Size	5.3m x 7.5m (17.3ft x 24.6ft)
Wall Height	2200mm
Ridge Height	2900mm
Frame & Foundations	Ground-screws foundation
Flooring	Laminate
Flooring Insulation	EPS 100mm
Windows & Doors	Grey uPVC, double
External Cladding	THERMO WOOD
Roofing System	Grey Insulated Classic Metal
Internal Cladding	11mm T&G
Gutters & Downpipes	Included



External painting (incl. oil) €1,150

External + Internal painting (Internal & external (incl. oil and internal paint/stain) €2,650

Two Bed Eco Garden Room

6.0m x 11.0m



FREE
GERMAN MADE
SCHUCO PVC
WINDOW & DOOR UPGRADE
(WHILE STOCK LAST)

Price **€58,499**

Room Details

EPS Insulated (150mm) roof total thickness	217mm
EPS Insulated (100mm) walls total thickness	184mm
Size	6.0m x 11.0m (19.7ft x 36.1ft)
Wall Height	2200mm
Ridge Height	3100mm
Frame & Foundations	Ground-screws foundation
Flooring	Laminate
Flooring Insulation	EPS 100mm
Windows & Doors	Grey uPVC, double
External Cladding	THERMO WOOD
Roofing System	Grey Insulated Classic Metal
Internal Cladding	11mm T&G
Gutters & Downpipes	Included



External painting (incl. oil) **€2,300**

External + Internal painting
(Internal & external (incl. oil
and internal paint/stain) **€4,950**

Three Bed Eco Garden Room

7.0m x 12.5m



FREE
GERMAN MADE
'SCHUCO' PVC
WINDOW & DOOR UPGRADE
(WHILE STOCK LAST)

Price **€74,499**

Room Details

EPS Insulated (150mm) roof total thickness	217mm
EPS Insulated (100mm) walls total thickness	184mm
Size	7.0m x 12.5m (23.0ft x 41.0ft)
Wall Height	2200mm
Ridge Height	3100mm
Frame & Foundations	Ground-screws foundation
Flooring	Laminate
Flooring Insulation	EPS 100mm
Windows & Doors	Grey uPVC, double
External Cladding	THERMO WOOD
Roofing System	Grey Insulated Classic Metal
Internal Cladding	11mm T&G
Gutters & Downpipes	Included



External painting (incl. oil) €3,150

External + Internal painting
(Internal & external (incl. oil
and internal paint/stain) €6,550



Hybrid Log Cabins

Introducing our new Hybrid log cabin range, a perfect blend of traditional charm and modern innovation. The Hybrid log cabin features a robust structure crafted from 45/58mm solid log walls, made from slow-grown, FSC-approved Scandinavian Pine. This high-quality timber adds warmth and cosiness to the interior, ensuring a comfortable living space.

For superior insulation, the cabin incorporates top-quality insulation materials and breathable damp-proof membranes. This meticulous insulation process ensures excellent thermal performance, keeping the cabin energy-efficient and comfortable year-round.

All Hybrid log cabins come equipped with premium German-made Schüco anthracite grey uPVC windows and doors. These high-quality fittings not only enhance the cabin's thermal efficiency but also add a sleek, contemporary look.



The exterior of the Hybrid log cabin is designed for both aesthetics and durability. Three sides are finished with sleek steel cladding, providing a contemporary, maintenance-free facade. The front wall of the cabin is finished with thermally treated pine cladding, enhancing its visual appeal and adding a touch of luxury.

The Hybrid log cabin is the ideal choice for those seeking a blend of classic log cabin ambience and modern, low-maintenance exterior finishes. Enjoy the best of both worlds with our innovative and stylish Hybrid log cabin range.



Hybrid Studio Log Cabin

5.2m x 5.5m



FREE
GERMAN MADE
"SCHÜCO" PVC
WINDOW & DOOR UPGRADE
(WHILE STOCK LAST)

Price **€20,490**

Room Details

Size	5.2m x 5.5m (17ft x 18ft)
Log thickness	44mm
Floor insulation	100mm
Wall insulation	100mm
Roof insulation	100mm
Total wall thickness	189mm
Windows & doors	Schüco (German made) uPVC - antracite grey
Interior doors	Solid wood
Exterior cladding	"Classic click" metal cladding + thermally treated pine feature wall
Roofing material	"Classic click" metal roofing
Gutters & downpipes	Included
Internal Cladding	11mm T&G
Gutters & Downpipes	Included



Available Upgrades:

Timber frame & block pad foundation	€1,750
Laminate flooring	€1,050
Oiling (incl. oil)	€400

Hybrid One Bed Log Cabin

4.0m x 8.2m



FREE
GERMAN MADE
SCHÜCO® uPVC
WINDOW & DOOR UPGRADE
(WHILE STOCK LAST)

Price **€24,660**

Room Details

Size	4.0m x 8.2m (13ft x 27ft)
Log thickness	44mm/58mm
Floor insulation	100mm
Wall insulation	100mm
Roof insulation	100mm
Total wall thickness	189mm
Windows & doors	Schüco (German made) uPVC - antracite grey
Interior doors	Solid wood
Exterior cladding	"Classic click" metal cladding + thermally treated pine feature wall
Roofing material	Classic click" metal roofing
Gutters & downpipes	Included
Internal Cladding	11mm T&G
Gutters & Downpipes	Included



Available Upgrades:

Timber frame & block pad foundation	€2,000
Laminate flooring	€1,100
Upgrade to 58mm log	€1,800
Oiling (incl. oil)	€400

All visuals shown are for illustrations purposes. Actual cabin details may vary.

WWW.LOGHOUSE.IE [f/LOGHOUSE.IE](https://www.facebook.com/loghouse.ie)

Hybrid Two Bed Log Cabin

6.5m x 9.3m



FREE
GERMAN MADE
"SCHÜCO" PVC
WINDOW & DOOR UPGRADE
(WHILE STOCK LAST)



Price **€39,960**

Room Details

Size	6.5m x 9.3m (21.3ft x 30.5ft)
Log thickness	44mm/58mm
Floor insulation	100mm
Wall insulation	100mm
Roof insulation	100mm
Total wall thickness	189mm
Windows & doors	Schüco (German made) uPVC - antracite grey
Interior doors	Solid wood
Exterior cladding	"Classic click" metal cladding + thermally treated pine feature wall
Roofing material	"Classic click" metal roofing
Gutters & downpipes	Included
Internal Cladding	11mm T&G
Gutters & Downpipes	Included

Available Upgrades:

Timber frame & block pad foundation	€3,690
Laminate flooring	€2,030
Upgrade to 58mm log	€2,600
Oiling (incl. oil)	€500

Hybrid Three Bed Log Cabin A

7.0m x 12.5m



FREE
GERMAN MADE
SCHÜCO® PVC
WINDOW & DOOR UPGRADE
(WHILE STOCK LAST)

Price **€59,960**

Room Details

Size	7.0m x 12.5m (23ft x 41ft)
Log thickness	44mm/58mm
Floor insulation	100mm
Wall insulation	100mm
Roof insulation	100mm
Total wall thickness	189mm
Windows & doors	Schüco (German made) uPVC - antracite grey
Interior doors	Solid wood
Exterior cladding	"Classic click" metal cladding + thermally treated pine feature wall
Roofing material	Classic click" metal roofing
Gutters & downpipes	Included
Internal Cladding	11mm T&G
Gutters & Downpipes	Included



Available Upgrades:

Timber frame & block pad foundation	€5,340
Laminate flooring	€2,030
Upgrade to 58mm log	€3,500
Oiling (incl. oil)	€500

Hybrid Three Bed Log Cabin B

12.0m x 7.0m



FREE
GERMAN MADE
'SCHÜCO' PVC
WINDOW & DOOR UPGRADE
(WHILE STOCK LAST)



Price **€57,990**

Room Details

Size	12.0m x 7.0m (39,4ft x 23ft)
Log thickness	44mm/58mm
Floor insulation	100mm
Wall insulation	100mm
Roof insulation	100mm
Total wall thickness	189mm
Windows & doors	Schüco (German made) uPVC - antracite grey
Interior doors	Solid wood
Exterior cladding	"Classic click" metal cladding + thermally treated pine feature wall
Roofing material	"Classic click" metal roofing
Gutters & downpipes	Included
Internal Cladding	11mm T&G
Gutters & Downpipes	Included



Available Upgrades:

Timber frame & block pad foundation	€5,130
Laminate flooring	€3,360
Upgrade to 58mm log	€3,000
Oiling (incl. oil)	€600

Hybrid Four Bed Log Cabin

7.5m x 14.0m



FREE
GERMAN MADE
SCHÜCO® PVC
WINDOW & DOOR UPGRADE
(WHILE STOCK LAST)

Price **€69,760**

Room Details

Size	7.5m x 14.0m (24.6ft x 46ft)
Log thickness	44mm/58mm
Floor insulation	100mm
Wall insulation	100mm
Roof insulation	100mm
Total wall thickness	189mm
Windows & doors	Schüco (German made) uPVC - antracite grey
Interior doors	Solid wood
Exterior cladding	"Classic click" metal cladding + thermally treated pine feature wall
Roofing material	Classic click" metal roofing
Gutters & downpipes	Included
Internal Cladding	11mm T&G
Gutters & Downpipes	Included



Available Upgrades:

Timber frame & block pad foundation	€5,340
Laminate flooring	€2,030
Upgrade to 58mm log	€3,500
Oiling (incl. oil)	€500

‘Bespoke’ Products

At Loghouse.ie, we offer a “bespoke” or custom design service to tailor all our pre-engineered models to your needs or start from scratch with your own idea with help from our highly qualified team of planners and log cabin experts, we will

guide you through the design process.

Our staff can provide working drawings, three dimensional renderings and technical specifications to suit your specific design so you can “visualise it” in real time before it is even built.

Extensions

Whether you are adding one small room or doubling the size of your house we offer a comprehensive, professional service and competitive pricing. We specialise in building your dream home, extension, sunroom or porch with matching materials, making the

extensions look part of your original house.

If you wish to make home improvements, below is a quick checklist of services and a list of upgrades that we can bring to your home.

Extensions, at a glance...

- A rated
- Fully insulated timber frame extensions
- Our in house design available to discuss your needs
- Quick on site assembly
- Double / triple glazed windows and doors
- Exterior can be rendered or timber cladded
- Internally, plasterboard or timber finish
- Planning arranged if needed

Guide Price

€850 sq/m
€80 sq/ft

Delivered & Fitted

Price Includes...

- Building delivered and fitted
- Fully insulated
- Walls 45+100+19mm
- Total wall thickness 164mm
- 100mm roof insulation
- 100mm floor insulation
- Living type windows and doors
- Steel roof

Priced on site:

- Foundation
- Connecting to main house
- Plumbing
- Kitchens
- Electrics
- Painting



Log Cabin Mobile Homes

A lot of people nowadays spend their life travelling all over the world - if you are such a person and tourism is your life, choose the mobile home that suits your needs. Mobile homes can be like usual homes people live in, fitted with everything needed for living: electricity, furniture, kitchen and other utilities. Mobile homes are a cost effective

alternative (even if it is a permanent structure).

All our mobile home log cabin designs can be fully customised to meet your needs. Please fill in the details of your bespoke ideas, use our sketch pad, or alternatively attach a plan or photo to help us better understand what you would like to do.

Mobile Homes, at a glance...

- Designed for holiday parks and temporary accommodation
- Can be moved in one piece
- A Rated
- Double / triple glazed windows
- LED lighting
- Smart heating systems
- Affordable



Guide Price
€950 sq/m
€90 sq/ft

Delivered & Fitted

Price Includes

- Building delivered and fitted
- Fully insulated
- Walls 60+100+19mm
- Total wall thickness 179mm
- 100mm roof insulation
- 100mm floor insulation
- Living type windows and doors
- Steel roof

Priced on site:

- Foundation
- Connecting to main house
- Plumbing
- Kitchens
- Electrics
- Painting





For perfect results Loghouse recommends **Vivacolor & Tikkurila** Paint & Stains Range
€130 / 9Ltr Bucket



www.tikkurila.com

For more information and painting quotations please contact our partners at: **085 – 874 2629, 085 – 862 1972** or email: info@ekdecor.ie

Paint



2661



2686



2688



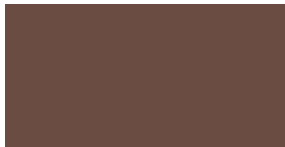
2685



2682



2680



2664



435



568

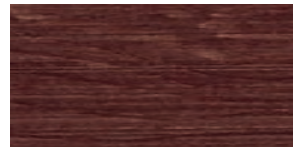
Stains



5060



5052



5077

Wall Make up Detail



Completed Projects

1 Bed Log Cabin



2 Bed Log Cabin



3 Bed Log Home



4 Bed Log Cabin



Home Office Log Cabin



Eco Garden Rooms



Home Gym Log Cabin



Extension Log Cabin



Mobile Home



Pre-School Log Cabin



Visit one of our **5 showrooms** to view the extensive range of our products and services.

Dublin North Showroom

Tue – Sat: 12 – 5pm,
Sun & Mon: Closed



Kinsealy Garden Centre
Malahide Road,
Kinsealy, Dublin D17 XD86
Tel: 01 – 201 7675
Mob: 085 – 805 0733
Email: martin@loghouse.ie

Dublin South Showroom

7 Days a week: 12 – 5pm



Horkans Garden Centre
Glen of the Downs
Bray, Co Wicklow A98 W3V8
Tel: 01 – 201 7675
Mob: 087 – 465 4750
Email: rinalds@loghouse.ie

Loghouse Factory Warehouse Residential Only

Mon – Fri:
By appointment only



Unit 518A, Grants Crescent
Greenogue Business Park
Rathcoole Co. Dublin D24 FD63
Tel: 01 – 201 7675
Mob: 087 – 779 4905
Email: keith@loghouse.ie

Cork City Showroom

7 Days a week: 12 – 5pm



Hanley's of Cork, Frankfield
Co. Cork T12 C851
Tel: 021 – 243 9151
Email: steven@loghouse.ie
Mob: 085 – 861 3489
Email: denis@loghouse.ie
Mob: 087 – 139 0957

Athlone Showroom

7 Days a week: 10 – 5pm



Fernhill Garden Centre
Ballymahon Road, Cornanmagh
Athlone, Co. Westmeath
Tel: 090 – 661 6221
Mob: 087 – 394 8038
Email: dermot@loghouse.ie
Mob: 087 – 263 5941
Email: carlos@loghouse.ie

For full range of products please visit www.loghouse.ie